

HOW WIC HELPS

THE PUEBLO OF SAN FELIPE



State WIC Director

Shelby Lucero

131 Hagen Road

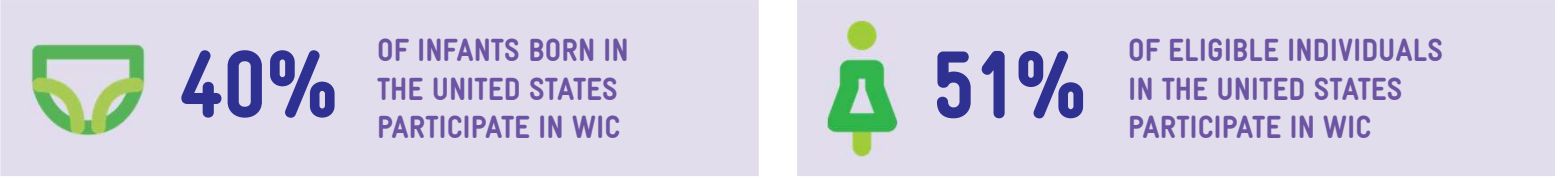
San Felipe Pueblo, NM 87001

505.771.7200

slucero@sfpueblo.com

Mission of WIC

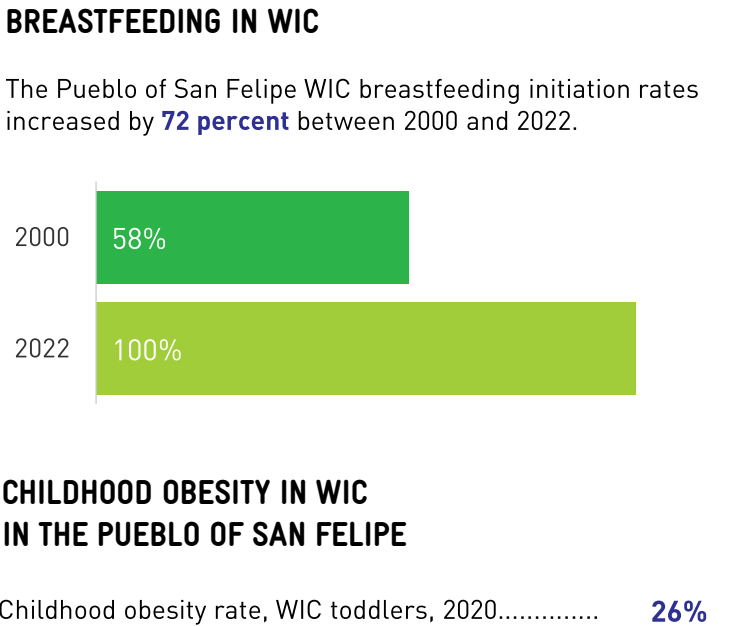
Assuring healthy pregnancies, birth outcomes, growth and development for mothers, babies, and young children to age 5 who are at nutritional risk. Providing nutritious supplemental foods, breastfeeding promotion and support, education on healthy eating, and referrals to healthcare and critical social services.




WHO PARTICIPATES IN WIC IN THE PUEBLO OF SAN FELIPE?

203 WIC PARTICIPANTS

Pregnant women.....	11
Breastfeeding women.....	22
Postpartum women.....	7
Infants.....	44
Children.....	119





Fruit and Vegetable Benefit: Congress enhanced WIC’s fruit and vegetable benefit to align with scientific recommendations. Current monthly benefit amounts are \$26 for children, \$47 for pregnant and postpartum participants, and \$52 for breastfeeding participants. In FY 2023, WIC provided an estimated **\$58,140** in fruit and vegetable benefits to **159** participants in the Pueblo of San Felipe.

THE PUEBLO OF SAN FELIPE WIC PARTICIPANT CHARACTERISTICS			HOW WIC SUPPORTED THE PUEBLO OF SAN FELIPE ECONOMY IN FY 2023	
\$32,754	91%	\$225.69	\$548,874	\$903,118
AVERAGE FAMILY INCOME	RECEIVED MEDICAID	AVERAGE MONTHLY FOOD COST IN FY 2023	TO SPEND AT FOOD RETAILERS	NUTRITION, BREASTFEEDING SERVICES & ADMIN

Sources: WIC eligible individuals participating from USDA WIC Eligibility Estimates report for 2021 (<https://www.fns.usda.gov/wic/eligibility-and-program-reach-estimates-2021>). WIC participants and economic impact from USDA WIC Data Tables for fiscal year (FY) 2023 (<https://www.fns.usda.gov/pd/wic-program>) as of June 20, 2024. Participant characteristics for 2022 and WIC breastfeeding and rates for years displayed from USDA WIC Participant and Program Characteristics reports (<https://www.fns.usda.gov/research/wic/participant-program-characteristics-2022>). WIC fruit and vegetable benefit calculated as the sum of FY 2023 issuance rates multiplied by average participation rates for each participant category from USDA WIC Data Tables. Maternal mortality from America’s Health Rankings (https://www.americashealthrankings.org/explore/measures/maternal_mortality_c). Infant mortality and preterm birth rate from CDC (https://www.cdc.gov/nchs/pressroom/stats_of_the_states.htm). Obesity outcomes from CDC (<https://www.cdc.gov/obesity/data/obesity-among-WIC-enrolled-young-children>).