



# Missouri

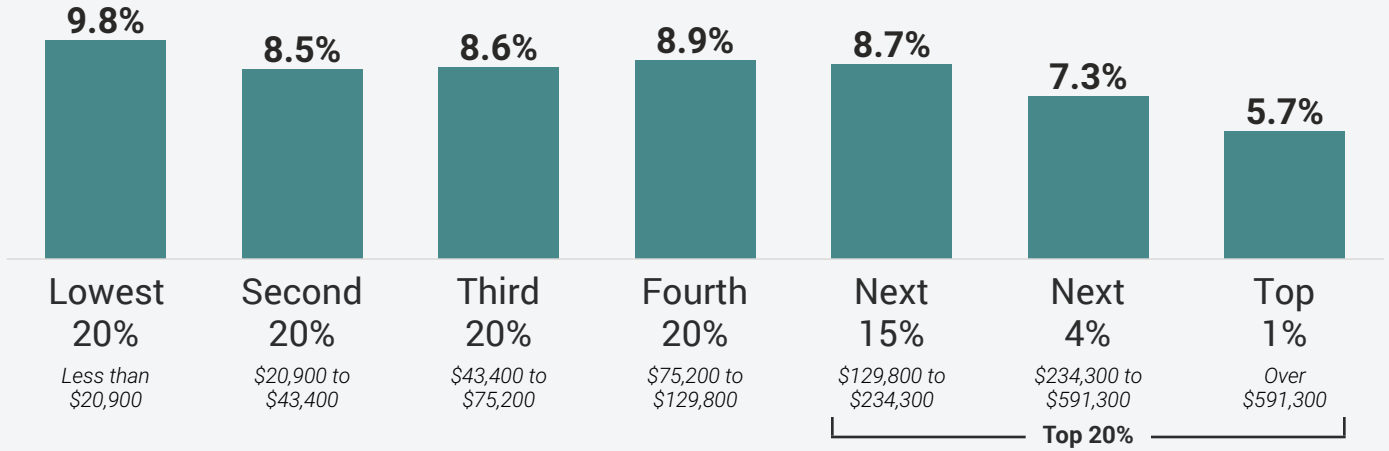
## State and local tax shares of family income

### Total Taxes

Share of family income

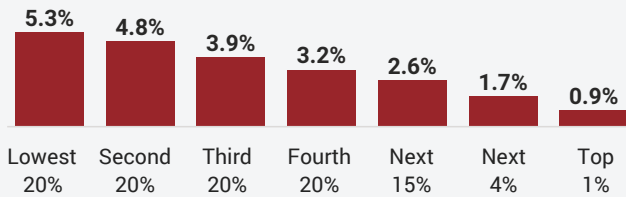


REGRESSIVE



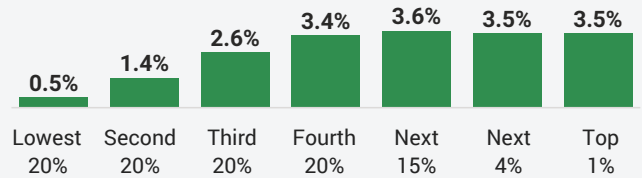
### Sales & Excise Taxes

Share of family income



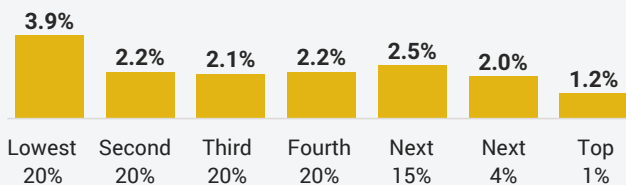
### Personal Income Taxes

Share of family income



### Property Taxes






Share of family income



Note: All figures and charts show 2024 tax law in Missouri, presented at 2023 income levels. Senior taxpayers are excluded for reasons detailed in the methodology. Our analysis includes nearly all (98 percent) state and local tax revenue collected in Missouri. These figures depict Missouri's top income tax rate at 4.8 percent. The top rate is set to decrease to 4.5 percent. As seen in Appendix E, this will decrease the top fifth's overall tax rate by 0.2 percentage points and cause the state to move 1 spot in the ITEP Inequality Index rankings, from 31st to 30th most regressive.

# Missouri State and local tax (cont.)

Individual figures may not sum to totals due to rounding.

Income Group	Top 20%						
	Lowest 20%	Second 20%	Middle 20%	Fourth 20%	Next 15%	Next 4%	Top 1%
<b>Income Range</b>	Less than \$20,900	\$20,900 to \$43,400	\$43,400 to \$75,200	\$75,200 to \$129,800	\$129,800 to \$234,300	\$234,300 to \$591,300	Over \$591,300
<b>Average Income in Group</b>	\$12,100	\$31,000	\$58,400	\$100,800	\$163,600	\$339,900	\$1,688,600
 <b>Sales &amp; Excise Taxes</b>	<b>5.3%</b>	<b>4.8%</b>	<b>3.9%</b>	<b>3.2%</b>	<b>2.6%</b>	<b>1.7%</b>	<b>0.9%</b>
General Sales—Individuals	3.0%	2.9%	2.4%	2.0%	1.6%	1.0%	0.3%
Other Sales & Excise—Ind.	1.2%	0.9%	0.6%	0.5%	0.3%	0.2%	0.1%
Sales & Excise—Business	1.1%	0.9%	0.8%	0.7%	0.6%	0.5%	0.5%
 <b>Property Taxes</b>	<b>3.9%</b>	<b>2.2%</b>	<b>2.1%</b>	<b>2.2%</b>	<b>2.5%</b>	<b>2.0%</b>	<b>1.2%</b>
Home, Rent, Car—Individuals	3.5%	2.0%	2.0%	2.0%	2.2%	1.7%	0.5%
Other Property Taxes	0.3%	0.2%	0.2%	0.2%	0.2%	0.3%	0.7%
 <b>Income Taxes</b>	<b>0.5%</b>	<b>1.4%</b>	<b>2.6%</b>	<b>3.4%</b>	<b>3.6%</b>	<b>3.5%</b>	<b>3.6%</b>
Personal Income Taxes	0.5%	1.4%	2.6%	3.4%	3.6%	3.5%	3.5%
Corporate Income Taxes	0.0%	0.0%	0.0%	0.0%	0.0%	0.0%	0.0%
 <b>Other Taxes</b>	<b>0.1%</b>	<b>0.1%</b>	<b>0.1%</b>	<b>0.1%</b>	<b>0.1%</b>	<b>0.0%</b>	<b>0.1%</b>
 <b>TOTAL TAXES</b>	<b>9.8%</b>	<b>8.5%</b>	<b>8.6%</b>	<b>8.9%</b>	<b>8.7%</b>	<b>7.3%</b>	<b>5.7%</b>

## ITEP Tax Inequality Index

ITEP’s Tax Inequality Index measures the effects of each state’s tax system on income inequality. **According to this measure, Missouri has the 31st most regressive state and local tax system in the country.** Income disparities are larger in Missouri after state and local taxes are collected than before. (See Appendix B for state-by-state rankings and the report methodology for additional detail.)

## Tax features driving the data in Missouri

PROGRESSIVE

Provides an Earned Income Tax Credit (EITC)

Graduated personal income tax structure; however top rate kicks in at \$8,449 so virtually flat

REGRESSIVE

Mismeasurement of home value in the property tax tilts in a regressive direction

State sales tax base includes groceries, though taxed at a lower rate

Income tax exclusion for pass-through business income

No refundable income tax credits to offset sales, excise, and property taxes

Does not use combined reporting as part of its corporate income tax

Does not levy a tax on estates or inheritances

Partial income tax deduction for federal income taxes paid

Local sales tax bases include groceries