

KEEP ZIKA OUT OF SCHOOLS

MAINTENANCE GUIDELINES FOR A MOSQUITO-FREE SCHOOL SITE

For: Custodial, HVAC, Electrical, Landscaping Departments

Due to increased incidence of invasive *Aedes* species mosquitoes ON school property, the Greater Los Angeles County Vector Control District strongly urges schools to implement the following WEEKLY INSPECTION & CORRECTION recommendations immediately. Keeping your school clear of standing water will prevent mosquitoes that can carry Zika and keep your students safe.

CUSTODIAL

- Ensure trash receptacles do not hold water. Drill drain holes as needed
- Remove leaves/debris from roof gutters *at least* once per month
- Do not store buckets/containers outdoors where rainwater can collect
- Check tarps after every rain for water accumulation
- Check for and remove all trash – even bottle caps – that can hold water and breed mosquitoes
- Ensure water fountains and spigots do not leak or cause water to collect
- Keep floor drains clear
- Watch for and remove indoor water in plant saucers, decorative pots, vases, etc. **These require permanent removal.**
- Remove and recycle all old tires



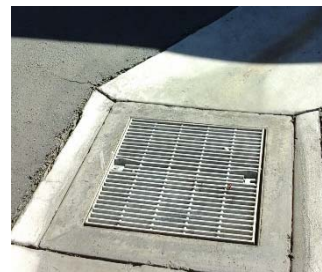
HVAC & ELECTRICAL

- HVAC drip pans must not be allowed to hold water for more than 96 hours
- Route condensation to gravel-filled infiltration basin. Maintain to ensure infiltration
- Check basement drains and remove standing water weekly
- Check all below-ground vaults for standing water, and ensure complete drainage



LANDSCAPING

- Check all landscape irrigation equipment and repair leaks
- Chain link fence posts must have caps to keep water out
- Ensure valve boxes do not hold water
- Prevent overwatering of lawns and runoff into gutters
- Ensure equipment is stored out of rain and cannot accumulate water
- Drain boxes/sumps **MUST** drain **COMPLETELY** at all times
- Keep debris/leaf litter out of gutters and flow-through drains



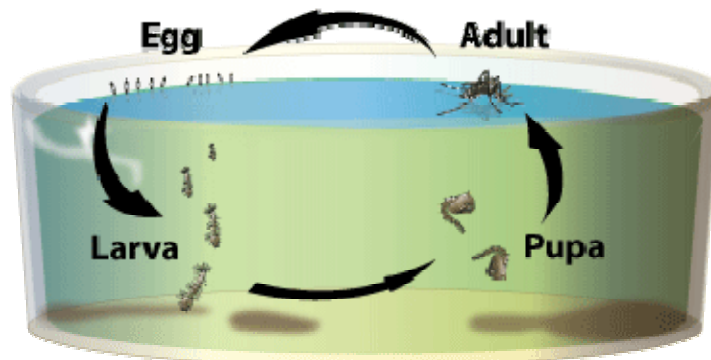
SCHOOL-SITE BMPs

- Stormwater BMPs designed to hold water must be sealed to prevent mosquito entry
- Rain barrels must be tightly sealed at all entrances with 1/16th inch wire mesh. Water in rain barrels should be used promptly, and emptied completely between rain events
- Vacuum on-site BMPs weekly to remove water. Modify to encourage infiltration if at all possible
- Cisterns must be tightly sealed to prevent mosquito entry



THE CHALLENGE

Mosquitoes develop from egg to adult in 5-7 days. Female mosquitoes lay eggs in or at the edges of water-filled containers. Eggs from *Aedes* mosquitoes can remain alive **for years** on the sides of containers, vaults, plant saucers, and trashcans and will hatch the next time they are flooded with water.



The Greater Los Angeles County Vector Control District (GLACVCD) wants to ensure your school site is free of mosquitoes all year long. GLACVCD offers free on-site inspection & training for school staff to ensure they know how to properly search for and control mosquito breeding on campus.



Greater Los Angeles County Vector Control District

Santa Fe Springs Office:

12545 Florence Avenue
Santa Fe Springs, CA 90670
562-944-9656

Sylmar Office:

16320 Foothill Blvd.
Sylmar, CA 91342
818-364-9589

