

GLACVCD

BOARD OF TRUSTEES MEETING

AGENDA AND EXHIBITS



Thursday, October 12th 2017

7:00 p.m. Board Meeting

Santa Fe Springs District Headquarters

12545 Florence Avenue

Santa Fe Springs, CA 90670

Trustee Steve Croft, President

Trustee Mark W. Bollman, Vice President

Baru Sanchez, Secretary-Treasurer

General Manager, Truc Dever

Director of Fiscal Operations, Carolyn Weeks

Director of Operations, Mark Daniel

Director of Community Affairs, Kelly Middleton

Director of Scientific-Technical Services, Susanne Kluh

Director of Human Resources, Rakesha Thomas

Board Legal Counsel, Quinn M. Barrow, Richards, Watson, Gershon

Labor Legal Counsel, Scott Tiedemann, Liebert, Cassidy, Whitmore

Copies of staff reports or other written documentation relating to agenda items are on file at the District's Headquarters at the Front Office and are available for public inspection. If you have questions regarding an agenda item, please contact the Front Office Staff at (562) 944-9656 during regular business hours.

Pursuant to the Americans with Disabilities Act, persons with a disability who require a disability-related modification or accommodation in order to participate in a meeting, including auxiliary aids or services, may request such modification or accommodation from the front office at (562)944.9656 ext. 504. Notification 48 business hours prior to the meeting will enable the facility staff to make reasonable arrangements to assure accessibility to the meeting.

Please refrain from smoking, eating or drinking in the Boardroom

**GREATER LOS ANGELES COUNTY
VECTOR CONTROL DISTRICT**

12545 Florence Avenue, Santa Fe Springs, CA 90670
Office (562) 944-9656 Fax (562) 944-7976
Email- info@glacvcd.org Website: www.glacvcd.org

PRESIDENT

Steve Croft, Lakewood

VICE PRESIDENT

Mark W. Bollman, Cerritos

SECRETARY-TREASURER

Baru Sanchez, Cudahy

GENERAL MANAGER

Truc Dever

A G E N D A

**THE REGULAR MEETING
OF THE BOARD OF TRUSTEES**

• Thursday, October 12, 2017 •

District Office
12545 Florence Avenue
Santa Fe Springs, California 90670

ARTESIA

Sally Flowers

BELL

Ali Saleh

BELL GARDENS

Pedro Aceituno

BELLFLOWER

Sonny R. Santa Ines

BURBANK

Dr. Jeff D. Wassem

CARSON

Elito M. Santarina

COMMERCE

Leonard Mendoza

DIAMOND BAR

Steve Tye

DOWNEY

Robert Kiefer

GARDENA

Dan Medina

GLENDALE

Jerry Walton

HAWAIIAN GARDENS

Barry Bruce

HUNTINGTON PARK

Marilyn Sanabria

LA CAÑADA FLINTRIDGE

Michael T. Davitt

LA HABRA HEIGHTS

Catherine Houwen

LA MIRADA

Larry Mowles

LONG BEACH

VACANT

LOS ANGELES CITY

Steven Appleton

LOS ANGELES COUNTY

Martin H. Kreisler

LYNWOOD

Salvador Alatorre

MAYWOOD

Eddie De La Riva

MONTEBELLO

Avik Cordeiro

NORWALK

Leonard Shryock

PARAMOUNT

Dr. Tom Hansen

PICO RIVERA

Bob Archuleta

SAN FERNANDO

Nina Herrera

SAN MARINO

Scott T. Kwong

SANTA CLARITA

Heidi Heinrich

SANTA FE SPRINGS

Luis Gonzalez

SIGNAL HILL

Robert Copeland

SOUTH EL MONTE

Hector Delgado

SOUTHGATE

Maria Davila

WHITTIER

Josué Alvarado

6:30 P.M. - Library Conference Room: Pre-meeting refreshments

7:00 P.M. – Conference Room, Convene Board of Trustees Meeting

1. CALL TO ORDER

2. QUORUM (ROLL) CALL

3. INVOCATION

4. PLEDGE OF ALLEGIANCE

5. CORRESPONDENCE

6. INTRODUCTIONS

(Introductions requested by staff or Trustees of persons attending the meeting are made at this time).

- New La Cañada Flintridge Trustee – Michael T. Davitt
- Presentation of Service Award to Family of Fernando Rojas

7. PUBLIC COMMENT

(This time is reserved for members of the public to address the Board relative to matters of business on and off the agenda. Comments will be limited to three minutes per person).

**8. CONSENT AGENDA (8.1-8.3)
VOTE REQUIRED**

- 8.1 Consideration of **Minutes 2017-09** of regular Board Meeting held on September 14, 2017. (**EXHIBIT A**)
- 8.2 Consideration of **Resolution 2017-13** Authorizing Payment of Attached Requisition September 1, 2017 through September 30, 2017. (**EXHIBIT B**)

- 8.3 Consideration of Joint Tax Sharing Resolution (JTSR) from the Sanitation District of Los Angeles County in conjunction with annexation number SCV-1087. This Resolution requests GLACVCD allocate 0.00057% of its current 0.0322% share of property tax resulting in a net share of 0.0316% to support services to the areas being annexed to the County Sanitation District. **(EXHIBIT C)**

Analysis: The applicant requested annexation of property into the Santa Clarita Valley Sanitation District in order to receive off-site disposal of sewage. The annexation process requires that a resolution for property tax revenue exchange be adopted by all the affected local agencies before an annexation may be approved. These requests are similar to many received from the county sanitation districts and public works in the past. By sharing the property tax increment with the District resulting from these annexations, GLACVCD will not lose any existing ad valorem tax revenue it currently receives from the affected territories. GLACVCD would only be giving up a portion of the revenues it would receive on increased assessed valuation.

9. ANNOUNCEMENT OF TRUSTEES' TERM OF OFFICE TO EXPIRE JANUARY 1, 2018

Summary: The General Manager has mailed correspondence advising the following named governing bodies that the two or four year term of office of its representative will expire at 12 p.m. on January 1, 2018, and has requested that they reappoint the trustee representative or successor for the next two or four year term of the office according to Division 3, Chapter 1, Article 3, Sections 2024 et. seq. of the State Health and Safety Code.

<u>Trustee Representative</u>	<u>Governing Body</u>
<i>Ali Saleh</i>	<i>City of Bell</i>
<i>Elito Santarina</i>	<i>City of Carson</i>
<i>Leonard Mendoza</i>	<i>City of Commerce</i>
<i>Steve Tye</i>	<i>City of Diamond Bar</i>
<i>Robert Kiefer</i>	<i>City of Downey</i>
<i>Dan Medina</i>	<i>City of Gardena</i>
<i>Michael Davitt</i>	<i>City of La Cañada Flintridge</i>
<i>Larry Mowles</i>	<i>City of La Mirada</i>
<i>Steve Croft</i>	<i>City of Lakewood</i>
<i>Vacant</i>	<i>City of Long Beach</i>
<i>Martin Kreisler</i>	<i>County of Los Angeles</i>
<i>Salvador Alatorre</i>	<i>City of Lynwood</i>
<i>Avik Cordeiro</i>	<i>City of Montebello</i>
<i>Scott Kwong</i>	<i>City of San Marino</i>
<i>Luis Gonzalez</i>	<i>City of Santa Fe Springs</i>
<i>Hector Delgado</i>	<i>City of South El Monte</i>
<i>Maria Davila</i>	<i>City of South Gate</i>

10. APPROVAL OF EXPENDITURES FOR TRUSTEE BOLLMAN TO ATTEND THE CDC-AMCA "TRAIN THE TRAINER" SESSION ON BEST PRACTICES FOR INTEGRATED MOSQUITO MANAGEMENT (EXHIBIT D) (VOTE REQUIRED)

Summary: The West Coast American Mosquito Control Association (AMCA) training hub is holding this event prior to the MVCAC Fall Quarterly meetings. Attendees will review and train to the Centers for Disease Control's (CDC) Best Practices for Integrated Mosquito Management manual and upon completion, be certified to share the information with mosquito control professionals and other stakeholders.

11. COMMITTEE REPORTS

11.1 Abatement Ad Hoc Committee

S. Alatorre, Abatement Chair

- 11.1.a Public Hearing To consider establishing penalties for nuisances and Ordinance and Resolutions regarding nuisance abatement
(*EXHIBIT E*)
- 11.1.b Vice President Bollman declares the Public Hearing open
- 11.1.c. Public comments
- 11.1.d. Vice President Bollman declares the Public Hearing closed
- 11.1.e. Discussion and consideration of **Ordinance No 17-001** regarding nuisance abatement and authorizing fines and penalties
(*EXHIBIT F*) (*VOTE REQUIRED*)
- 11.1.f. Discussion and Consideration of **Resolution 2017-14** amending and restating abatement procedures under the Mosquito Abatement & Vector Control District Law
(*EXHIBIT G*) (*VOTE REQUIRED*)
- 11.1.g. Discussion and consideration of **Resolution 2017-15** adopting penalties for the abatement of nuisances (*EXHIBIT H*) (*VOTE REQUIRED*)

11.2 Joint Personnel & Policy Committee

B. Bruce, Personnel Chair
A. Saleh, Policy Chair

- 11.2.a Report on discussions about Employee Handbook revisions

12. STAFF PROGRAM REPORTS: SEPTEMBER 2017

- 12.1 Manager's Report T. Dever, General Manager
- 12.2 Scientific-Technical: (Staff Report A) S. Kluh, Sci.-Tech Services Dir.
- 12.3 Operations: (Staff Report B) M. Daniel, Operations Dir.
- 12.4 Community Affairs: (Staff Report C) K. Middleton, Comm. Affairs Dir.
- 12.5 Fiscal: (Staff Report D) C. Weeks, Finance Director
- 12.6 Human Resources: (Staff Report E) R. Thomas, Human Resources Dir.
- 12.7 Legal Counsel Report Q. Barrow, Legal Counsel

13. OTHER

The Board may consider items not on the agenda provided that the Board complies with the Government Code (Brown Act) §54954.2(b).

14. ADJOURNMENT

The next Board of Trustees meeting will be scheduled on Thursday, November 9, 2017 at 7:00 p.m. at the District's headquarters at 12545 Florence Avenue, Santa Fe Springs.

GLACVCD BOARD OF TRUSTEES MEETING STAFF REPORTS



Thursday October 12th 2017

7:00 p.m. Board Meeting

Santa Fe Springs District Headquarters

12545 Florence Avenue

Santa Fe Springs, CA 90670

Trustee Steve Croft, President

Trustee Mark W. Bollman, Vice President

Baru Sanchez, Secretary-Treasurer

General Manager, Truc Dever

Director of Fiscal Operations, Carolyn Weeks

Director of Operations, Mark Daniel

Director of Community Affairs, Kelly Middleton

Director of Scientific-Technical Services, Susanne Kluh

Director of Human Resources, Rakesha Thomas

Board Legal Counsel, Quinn M. Barrow, Richards, Watson, Gershon

Labor Legal Counsel, Scott Tiedemann, Liebert, Cassidy, Whitmore

Copies of staff reports or other written documentation relating to agenda items are on file at the District's Headquarters at the Front Office and are available for public inspection. If you have questions regarding an agenda item, please contact the Front Office Staff at (562) 944-9656 during regular business hours.

Pursuant to the Americans with Disabilities Act, persons with a disability who require a disability-related modification or accommodation in order to participate in a meeting, including auxiliary aids or services, may request such modification or accommodation from the front office at (562)944.9656 ext. 504. Notification 48 business hours prior to the meeting will enable the facility staff to make reasonable arrangements to assure accessibility to the meeting.

Please refrain from smoking, eating or drinking in the Boardroom

GREATER LOS ANGELES COUNTY VECTOR CONTROL DISTRICT

12545 Florence Avenue, Santa Fe Springs, CA 90670
Office (562) 944-9656 Fax (562) 944-7976
Email: info@glacvcd.org Website: www.glacvcd.org

PRESIDENT

Steve Croft, Lakewood

VICE PRESIDENT

Mark W. Bollman, Cerritos

SECRETARY-TREASURER

Baru Sanchez, Cudahy

GENERAL MANAGER

Truc Dever

General Manager's Report for October 12, 2017 Board of Trustees Meeting

ARTESIA

Sally Flowers

BELL

Ali Saleh

BELL GARDENS

Pedro Aceituno

BELLFLOWER

Sonny R. Santa Ines

BURBANK

Dr. Jeff D. Wassem

CARSON

Elito M. Santarina

COMMERCE

Leonard Mendoza

DIAMOND BAR

Steve Tye

DOWNEY

Robert Kiefer

GARDENA

Dan Medina

GLENDALE

Jerry Walton

HAWAIIAN GARDENS

Barry Bruce

HUNTINGTON PARK

Marilyn Sanabria

LA CAÑADA FLINTRIDGE

Michael Davitt

LA HABRA HEIGHTS

Catherine Houwen

LA MIRADA

Larry P. Mowles

LONG BEACH

VACANT

LOS ANGELES CITY

Steven Appleton

LOS ANGELES COUNTY

Martin H. Kreisler

LYNWOOD

Salvador Alatorre

MAYWOOD

Eddie De La Riva

MONTEBELLO

Avik Cordeiro

NORWALK

Leonard Shryock

PARAMOUNT

Dr. Tom Hansen

PICO RIVERA

Bob J. Archuleta

SAN FERNANDO

Nina Herrera

SAN MARINO

Scott T. Kwong

SANTA CLARITA

Heidi Heinrich

SANTA FE SPRINGS

Luis Gonzalez

SIGNAL HILL

Robert D. Copeland

SOUTH EL MONTE

Hector Delgado

SOUTH GATE

Maria Davila

WHITTIER

Josué Alvarado

It is no exaggeration that fall is here and we are busier than we've ever been. The District broke records in September, with 993 service requests in one month. All hands are pitching in to answer phones, conduct door-to-door outreach campaigns, and carry out night control missions. Mosquito infection rates for West Nile virus are high, particularly in the Valley and we are doing all we can to prevent human infection in these areas. At the same time, intense biting pressure from invasive *Aedes* mosquitoes are prompting phone calls and requests for service from residents all throughout the County.

Awareness has been heightened by the September 25th press conference in Hawaiian Gardens hosted by Supervisor Janice Hahn's office and the County Public Health Department on Zika and West Nile virus prevention. We had more than a dozen media outlets covering the event which was aired on local radio and television stations throughout the day and covered by print publications during the week. The press conference was tied to the County's outreach blitz which activated more than 200 County personnel to distribute informational flyers and pamphlets on mosquito prevention to approximately 20,000 venues throughout the County. While the County focused on commercial properties, schools, grocery stores, and places of worship, our District staff distributed doorhangers and reached nearly 11,500 parcels in Glendale, Reseda, Northridge, and Encino where WNV risk has been particularly high this year.

To respond to the influx of *Aedes* service calls, we have transitioned three seasonal staff to limited term positions funded by the Zika ELC grant funding and cross-trained them on handling service calls as well as responding in the field. Staff are pushing hard, with some volunteering for night missions and to work their regular days off. We look forward to cooler weather and a slow-down of our mosquito season at the end of October.

To show our appreciation for the staff and their dedication to our mission, the District will be hosting an Employee Appreciation Day on October 11th. A flyer has been distributed and all Trustees are invited to attend the Hawaiian BBQ luncheon.

On another note, I am pleased to inform the Board that I have been selected by the Infectious Disease Team of the National Association of County and City Health Officials (NACCHO) to serve on their Zika Advisory Council. My application was submitted with the support of AMCA and MVCAC leadership and was selected out of a great number of applications, according to the Infectious Disease Team Director.

I will be participating in bimonthly phone calls to inform the organization on the assessment of local public health preparedness and response efforts for Zika and inform them on the tools, resources, workshops, and other forms of technical assistance intended to strengthen local health departments' preparedness and response efforts for Zika virus. A kick-off Zika Advisory Council meeting will be scheduled in October.

Lastly, I would like to end my report this month with a quick recap of the success of our *Mosquito Rap Video*, unveiled to the Board and to the public at last month's Board meeting. As of this writing, the video has gone viral, with mentions on Newsweek, KFI radio, KROQ's Kevin and Bean Show, PBS, KLOS, KFROG, and NBC in LA, just to name a few. There have been nearly 31,500 views on YouTube and 14,000 views on Facebook, not to mention the countless links and shares from other organizations. This truly has taken on a life of its own, informing viewers about the importance of mosquito bite prevention with a catchy beat and unforgettable lyrics. Thank you to our very talented staff for thinking outside of the box and creating something for the ages. Also thank you to our Trustees, and everyone who donated to the Mobile Science and Vector Education Foundation last month. Your support is greatly appreciated.

Yours truly,

A handwritten signature in black ink, appearing to read 'Truc Dever', with a stylized, flowing script.

Truc Dever
General Manager

Placeholder for Staff Report A

Due to technical difficulties, this report will be
distributed at the Board Meeting

GREATER LOS ANGELES COUNTY VECTOR CONTROL DISTRICT

WORK PERFORMED BY DISTRICT

September, 2017



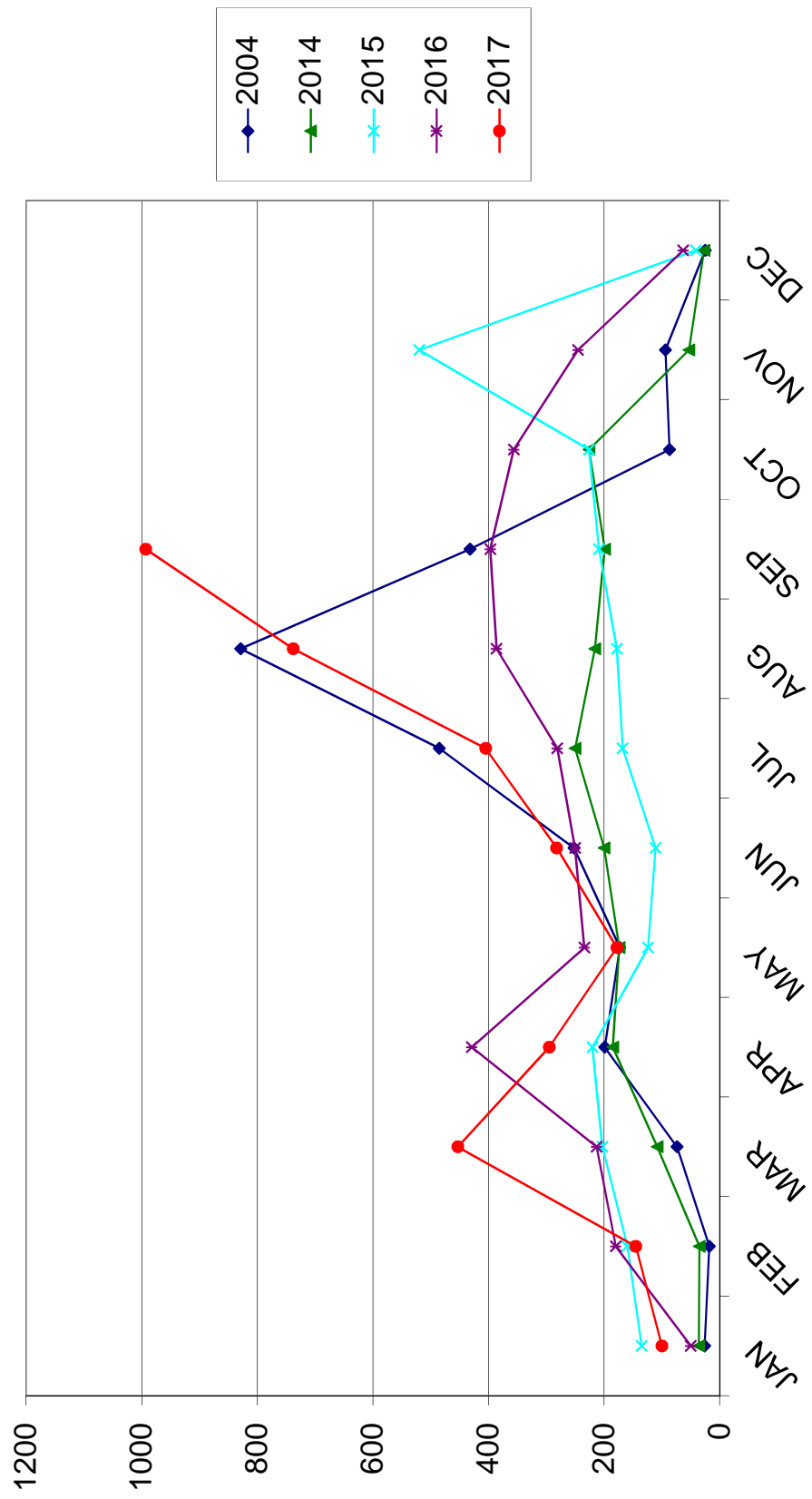
Mark Daniel, Operations Director
 Martin Serrano, Operations Supervisor, Headquarters
 Wesley Collins, Operations Supervisor, Sylmar
 Kevin Vargas, Operations Supervisor, USD
 Mark Hall, Urban Water Program Manager
 Vacant, Maintenance Supervisor

CONTROL AND OPERATIONS

						Hours worked September 2017	
Fishing (Mosquitofish)						2	236
Source Reduction						17	279
Mosquito Control	<i>Sources inspected 12,236 / Sources with larvae 5,592</i>					2,600	23,192
Insecticide used:							
Larvicide oils	16.133	gals @	\$14.13	per =	\$227.96		
Altosid ALL	0.389	gals @	\$269.62	per =	\$104.88		
Altosid Briquets 30 day	1,256	ea @	\$1.14	ea. =	\$1,431.84		
Altosid Briquets XR	28	ea @	\$3.38	ea. =	\$94.64		
Altosid Pellets	4.633	lbs @	\$27.24	per =	\$126.20		
Natular T-30	4	ea @	\$1.56	per =	\$6.24		
Fourstar BTI Brqts 45 day	59	ea @	\$1.30	per =	\$76.70		
Altosid WSP	433	ea @	\$0.84	per =	\$363.72		
Vectobac 12AS	38.064	gals @	\$38.62	per =	\$1,470.03		
Vectobac G	319.22	lbs @	\$2.63	per =	\$839.55		
Fourstar Briquets 45 day	0	ea @	\$1.30	per =	\$0.00		
Vectomax FG	427.57	lbs @	\$8.70	per =	\$3,719.86		
Vectomax WSP	166	ea @	\$0.97	per =	\$161.02		
Natular	0	gals @	\$877.61	per =	\$0.00		
Vectolex WDG	62.891	lbs @	\$56.06	per =	\$3,525.67		
Fourstar SBG	0	lbs @	\$2.81	per =	\$0.00		
Midge Control						0	0
Insecticide used:							
Dimilin WP 25%	0	lbs @	49.34	per =	\$0.00		
Blackfly Control						5	249
Insecticide used:							
Vectobac 12AS	17.375	gals @	\$38.62	per =	\$671.02		
Underground Mosquito Control	<i>UGSD inspected 3,925 / UGSD treated 3,559</i>					2,087	14,454
Insecticide used:							
Vectobac 12AS	11.122	gals @	\$38.62	per =	\$429.53		
Vectolex WDG	177.95	lbs @	\$56.06	per =	\$9,975.88		
Fogging						19	54
Insecticide used:							
Duet / Zenivex	.369/.00	gals @	200 / 85	per =	\$73.80		
				Total	\$23,298.54		
Supervisory						872	6,359
Continuing Education / Training						22	1,468
Overtime: Community Outreach						0	250
Mosquito Control						93	303
<u>REPAIR AND MAINTENANCE OF EQUIPMENT</u>							
Vehicles						513	5,745
Spray Equipment						47	386
Buildings and yards						188	2,962
VEHICLE MILEAGE :	September 51,825			2017 363,629		6,465	55,937

Greater Los Angeles County Vector Control District
Mosquito Service Request Report

	JAN	FEB	MAR	APR	MAY	JUN	JUL	AUG	SEP	OCT	NOV	DEC
2004	26	18	74	199	173	252	485	829	432	87	94	25
2014	36	35	108	185	174	200	250	216	199	226	53	27
2015	135	160	203	220	124	111	168	178	209	226	520	41
2016	50	180	213	429	234	250	281	386	397	356	245	63
2017	100	145	453	295	178	282	405	738	993			



BREAKDOWN OF MONTHLY SERVICE REQUESTS

AND REQUEST FOR MOSQUITO FISH

	Mosquitoes	Midges	Swimming Pools	Fish Ponds	Other	Black Flies	Yellow Jackets	Total Service Request	Mosquitofish Requests	Number of Mosquitofish
ARTESIA	3							3		0
BELL	11							11		0
BELLFLOWER	16		1					16	1	10
BELL GARDENS	6		1					6		0
BURBANK	8							8		0
CARSON	3		1					3		0
CERRITOS	12		1	1				12	1	10
COMMERCE	10		1					10		0
CUDAHY	5							5		0
DIAMOND BAR	6		4					6	1	10
DOWNEY	69		3	1				69	1	10
GARDENA	2							2		0
GLENDALE	25		4					25		0
HAWAIIAN GARDENS	8							8		0
HUNTINGTON PARK	12							12		0
LA CANADA FLINTRIDGE	2		1					2		0
LA HABRA HEIGHTS	1			1				1	1	10
LA MIRADA	35		1	1				35		0
LAKewood	14		2	1				14	1	10
LONG BEACH	23		2					23		0
LOS ANGELES CITY	258	1	36	9				259	4	40
LOS ANGELES COUNTY	142		11	4				142	3	30
LYNWOOD	4							4		0
MAYWOOD	2							2		0
MONTEBELLO	24		1	1				24	1	10
NORWALK	27		1					27		0
PARAMOUNT	11		1					11		0
PICO RIVERA	34		1	1				34	1	10
SAN FERNANDO	2							2		0
SAN MARINO	60		1	3				60	2	20
SANTA CLARITA	6		3					6		0
SANTA FE SPRINGS	14							14		0
SIGNAL HILL	1							1		0
SOUTH EL MONTE	1							1		0
SOUTH GATE	9							9		0
WHITTIER	126		3	1				126	1	10
TOTAL	992	1	80	24	0	0	0	993	18	180

	Drains	Ditches (Miles)	Standing Water	Lakes, Marshes (acres)	Swimming Pools	Fish Ponds	Sumps	Containers	Water Troughs	Well Cellars
ARTESIA	7						16			
BELL	8						1			3
BELLFLOWER	14	0.01	0.01		3	3	18			
BELL GARDENS	15						6			
BURBANK	66	0.03			6		7			
CARSON	37	0.05			6	2	7			
CERRITOS	120	0.02	0.01		1	1	20			
COMMERCE	43						11			
CUDAHY	18				2		5			
DIAMOND BAR	11	0.03			7	3	3			2
DOWNEY	43	0.01			11	3	14			
GARDENA	39	0.01					3			
GLENDALE	26	0.01			14	3	6			
HAWAIIAN GARDENS	23						7			
HUNTINGTON PARK	31					1	14			3
LA CANADA FLINTRIDGE	7				8	1				
LA HABRA HEIGHTS	1	0.04			3	3	6			0
LA MIRADA	29				7		1			
LAKewood	70		0.02		7	3	27			
LONG BEACH	101	0.08	0.03	3.77	3		42	175		10
LOS ANGELES CITY	404	0.09	1.75		324	23	202	7		28
LOS ANGELES COUNTY	113	0.17	0.3		17	6	21	15	3	
LYNWOOD	29				1		2			4
MAYWOOD	13					3	2			
MONTEBELLO	63	0.24	0.01				11	4		1
NORWALK	17				2		1			
PARAMOUNT	22				1	1	22			2
PICO RIVERA	31				2	2	6	3		
SAN FERNANDO					1					
SAN MARINO	21				4	1	1			
SANTA CLARITA	55	0.18	0.49		19	1	15			
SANTA FE SPRINGS	50	0.04					3			
SIGNAL HILL	146						37			1
SOUTH EL MONTE	65	0.15					27			
SOUTH GATE	45				3		9			1
WHITTIER	62	0.03	0.01		18	3	8			
Total	1845	1.19	2.63	3.77	470	63	581	204	3	55

	Channels (miles)	Debris Basins (acres)	Stabilizers	Outfalls	Freeway Drains	Undergrounds (miles)	Gutters	Catch Basins	Total Hrs. of Activity
ARTESIA						2.87	4.54	3	22.55
BELL	1					1.51	4.02		30.03
BELLFLOWER	4.5					3.2	9.81	1	51.73
BELL GARDENS	1.74				0.01	2.19	10.96		31.58
BURBANK	2.72			1		15.4		1	126
CARSON	5.55				0.06	7.74	42.02		119.84
CERRITOS	5.59			1	0.64	4.2	41.53	18	91.91
COMMERCE						5.04	1.5	9	59.19
CUDAHY						1.06	4.02	2	18.63
DIAMOND BAR	3.53	0.02				3.69	1.65		47.89
DOWNNEY	0.25				0.16	2.45	30.29	2	155.29
GARDENA	2.81					15.99	9.27	1	110.48
GLENDALE	3.18	0.85				29.54	9.32	6	256.09
HAWAIIAN GARDENS	1				0.06		7.93	3	15.55
HUNTINGTON PARK						2.65	4.02	2	37.46
LA CANADA FLINTRIL	0.02					0.7		1	16.1
LA HABRA HEIGHTS						0.16			8.54
LA MIRADA	5.97				0.02		31.64	5	87.3
LAKEWOOD	9.47					6.16	62	13	113.27
LONG BEACH	10.35			3	0.03		182.73	67	183.54
LOS ANGELES CITY	48.65	0.89		21		155.8	216.89	89	2177.05
LOS ANGELES COUN	14.14	0.37		1	0.06	14.58	2.94	37	369.5
LYNWOOD						5.4	2.88		39.06
MAYWOOD						0.43	4.02		17.55
MONTEBELLO	0.5			2		7.58	3.03	2	121.71
NORWALK	2					6.59	40.31	2	106.04
PARAMOUNT	0.25					5.6	8.73	2	70.11
PICO RIVERA	0.5	0.01		1		9.02	8.26	9	129.78
SAN FERNANDO	0.24					2.65			28.95
SAN MARINO						0.7	10.51	2	96.41
SANTA CLARITA	7.8	0.54		14	0.08	33.31	22.67	17	387.26
SANTA FE SPRINGS	2				0.03	3.72	36.24		75.16
SIGNAL HILL								4	4.9
SOUTH EL MONTE	5.15						10.51		36.05
SOUTH GATE	1.5				0.02	4.72	2.9		124.86
WHITTIER	2.19				0.01	9.38	38.95	10	304.42
Total	142.60	2.68	0.00	44.00	1.18	364.03	866.09	308	5671.78

GREATER LOS ANGELES COUNTY VECTOR CONTROL DISTRICT



COMMUNITY AFFAIRS PROGRAM

September 2017

Kelly Middleton, Director of Community Affairs

Levy Sun, Public Information Officer

LeShawn Simplis, Education Program Coordinator

Heather Hyland, Education Program Coordinator

Helen Kuan, Outreach Assistant

Departmental Activities

Administrative

- As Director of this Department, I must say I spent much of September basking in the glow of pride at the team of outstanding employees I get to work with every day. Because of their ingenuity and passion for making a real difference, this District has become a shining example of unique and effective outreach techniques. We look forward to sharing these successes with others in the industry at our upcoming AMCA and MVCAC meetings early next year. Thank YOU for supporting our programs.
- We are eager to welcome LeShawn Simplis back from Maternity Leave effective October 11, 2017!
- Worked with Vernon officials to strategize outreach to city leaders, residents, and businesses.
- Heather and Helen are participating on the employee appreciation day committee and have been actively involved in the planning process

Programmatic

- General:
 - Departments PIO and Education Assistant are coordinating with LA County DPH, Promotores, and Esperanza Community Housing on various outreach opportunities targeting Spanish-speaking residents and prepared on-hands activity for Promotores Annual Conference in October
 - Working with cities and community centers experiencing higher WNV activity to schedule additional events or presentations
 - Launched and participated in door-to-door campaigns to increase awareness of WNV in San Fernando Valley
 - Assisted Boston Globe (STAT News) reporter with interviews, field shoot of sentinel chicken program
 - Conducted inventory of brochures and restocked on items running low; restocked Sylmar facility in anticipation of future events
 - Updated databases for Outreach activities
 - Monitored ongoing advertising campaigns
 - Literature delivery to City of San Marino, Whittier, Vernon, and Bell, and Long Beach
- *Aedes*:
 - Implemented Zika and *Aedes* outreach with LA County DPH and Supervisor Hahn's office
 - Reviewed and revised presentation for Promotores Annual Conference in October
 - Created another outreach video to highlight the need for source reduction; promoted to FaceBook audiences in Whittier and surrounding communities due to high service request loads and increased bite pressure reported by residents
 - Created additional visuals for outreach events and presentations

STAFF REPORT C

Meetings & Training

- 9/7 - Zika Action Planning Meeting
- 9/11 - Teleconference - NinjaTropics video development
- 9/12 - Invasive *Aedes* teleconference
- 9/14 - Management Meeting
- 9/19 - LA County CDPH Orientation to VCDs in LA County
- 9/21 - Quarterly Safety Meeting
- 9/21 - LA County Zika storyboard meeting
- 9/22 - BOS District 5 update on communicable disease response & outreach
- 9/25 - LA County BOS, DPH, and VCD Press Conference
- 9/26 - Promotores meeting - teleconference
- 9/27- Managing Social Media Risk Webinar

Community Outreach Activities

Date	Event	City	# Reached	Materials Distributed
August	Neighborhood Watch Events (Mark Bollman)	Cerritos	70	Brochures, Giveaways
9/13	Senior Health Fair	La Mirada	83	Brochures, Giveaways
9/14	Santa Clarita Garden Club	Santa Clarita	20	Brochures, Giveaways
9/14	LA County Office of Education Presentation (Mark Hall)	Downey	50	Brochures
9/19	South Whittier Advisory Committee Meeting	Whittier	32	Brochures
9/19	Senior Apt. Presentation	Commerce	20	Brochures
9/20	Neighborhood Watch	Downey		
9/20	Franklin High School Parent Meeting (Spanish)	Los Angeles	10	Brochures, Giveaways
9/20	Door to Door	Glendale and Los Feliz	4,700	Brochures
9/24	Neighborhood Watch (Susanne Klueh)	San Marino	40	Brochures, Giveaways
9/26	City Staff Training	Santa Clarita	75	Brochures
9/28	Senior Apartments Presentation	Lake View Terrace	13	Brochures
9/28	Door to Door	Encino, Northridge, Reseda	5,300	Brochures
9/30	3K Walk and Run Event	Hawaiian Gardens	107	Brochures, Giveaways

Educational Outreach

The Department continues working to get the new Mosquito SWAT Lab up and running. Maintenance and our IT staff are finalizing installation of needed hardware and ensuring the technology works seamlessly when on the road. We have also continued work with off-site vendors to develop touch screen interactive materials. Four schools have been selected to pilot the program and teachers will be vital in critiquing the program for its value and efficacy at reaching both our goals and assisting teachers at reaching theirs.

STAFF REPORT C

Additionally, we are excited to showcase a new music video that is already going viral, reaching audiences of all ages! The video is the result of an amazing collaboration among all departments, and features a new rap artist, Metamorphosis. This will get everyone in the community excited and aware about vector control, and promote the District's new Mosquito SWAT Lab. We hope you will enjoy seeing all of our District superstars in action! Check out the long list of media outlets below that promoted the District's new Rap Video!

Media Coverage/Publications

Media Activity

Date	Media Type	Media Name	Activity
9/1	Print	<i>SGV Tribune</i>	WNV kills LA County resident as reports of virus activity spike
9/1	Online/Print	<i>LA Daily News</i>	WNV kills LA County resident as reports of virus activity spike
9/19	Online	<i>Eastsider LA</i>	Interview: WNV risk near Glendale and Los Feliz
9/19	TV	<i>Fox News LA</i>	Interview: Door-to-door activity in Glendale
9/19	TV	<i>NBC LA</i>	Mosquito Rap Video Aims to Prevent West Nile Virus
9/20	Radio	<i>KFI</i>	Mosquito Rap warns risk of WNV and mosquitoes
9/20	TV	<i>ABC</i>	West Covina woman succumbs to WNV
9/20	Online	<i>ContagionLive.com</i>	WNV cases continue to spring up, despite mosquito season drawing to a close
9/20	Online	<i>Eastsider LA</i>	Health officials launch door-to-door campaign against WNV
9/20	TV	<i>CBS</i>	Family mourns West Covina woman, 84, killed by horrendous WNV
9/21	Online/Print	<i>LA Times</i>	Multiple cases of West Nile virus in Glendale prompt education campaign
9/22	Radio	<i>KROQ</i>	Mosquito rap video commentary
9/22	Radio	<i>KFROG 95.1</i>	Mosquito rap video commentary
9/22	Radio	<i>Power 106</i>	Mosquito rap video commentary
9/22	Radio	<i>KLOS</i>	Mosquito rap video commentary

STAFF REPORT C

9/23	Online/Print	<i>LA Daily News</i>	LA County leaders to launch new campaign to warn residents about mosquitoes
9/23	Online/Print	<i>LA Times</i>	West Nile virus has killed 8 Californians this year. In parts of L.A. County, the risk is especially high
9/25	Online/Print	<i>LA Times</i>	Death toll from West Nile climbs to 7 in L.A. County, officials say
9/25	TV	<i>NBC LA</i>	WNV and mosquito risks
9/25	TV	<i>CBS LA</i>	LA health officials launch door-to-door campaign to prevent WNV
9/27	Online/Print	<i>LA Daily News</i>	Vector Control sprays Sepulveda Basin to prevent WNV
9/28	TV	<i>Telemundo</i>	WNV door-to-door prevention and awareness campaign
9/29	Online	<i>Boston Globe / STAT News</i>	Interview: Deadly WNV cases are spiking in LA. The first line of defense: Chickens
9/29	Online	<i>Newsweek</i>	Los Angeles officials created a rap video for mosquito prevention
9/30	Online	<i>ProMed</i>	West Nile Virus - Americas (12): USA (California) ProMED Digest Vol 64, Issue 1
9/30	Online/TV	<i>PBS News Hour - The Rundown</i>	Deadly West Nile virus cases are spiking in LA. The first line of defense: chickens
9/30	TV	<i>KTLA</i>	WNV adulticiding in Sepulveda Basin

Press Releases / Blog Posts

Date	Activity
9/1	CDPH confirms first human WNV deaths of 2017
9/6	The music of mosquitoes: Creating a buzz through song
9/11	Disease Watch: WNV activity includes more human cases and mosquitoes
9/15	Nextdoor post: Cooler weather and impact on mosquitoes
9/19	WNV risk increases despite nearing end of summer
9/20	Nextdoor Post: Public Health PSA on mosquitoes and source reduction
9/26	WNV prevention efforts continue in San Fernando Valley

Total Coverage:
Fiscal Year-to-Date: 149

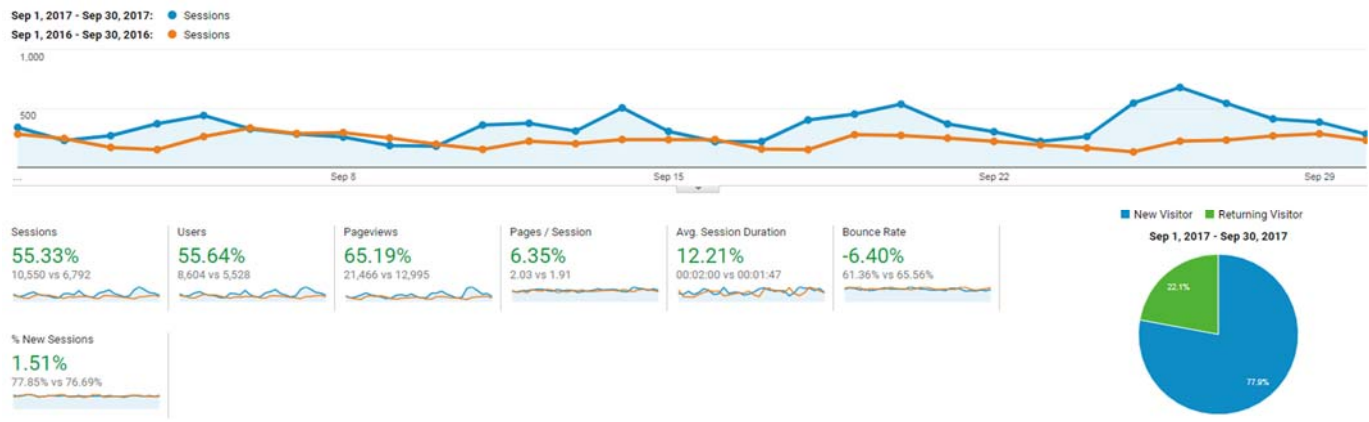
Digital Outreach

Website/Social Media Maintenance

- Posted regular updates to District's social media sites
- Updated revolving homepage images to reflect District's needs and outreach campaigns

Outreach Medium	Number of Subscribers	Reach
Email List	1,673	Same as subscribers
Facebook	3,760	9,952 (FB ads)
Twitter	839	16,000
Google Adwords	NA	1,952

GLACVCD Website



Summary

In the period from September 1 through September 30, 2017, the District website (www.glacvcd.org) had 10,550 visits from 8,604 visitors.



**GREATER LOS ANGELES COUNTY VECTOR
CONTROL DISTRICT**

**FISCAL REPORT
SEPTEMBER 2017**

*Carolyn M. Weeks, CPA, Director of Fiscal Operations
Alhaji Kamara, Accounting Clerk*

- Working on organizing storage files and asset tracking program
- The presentation of the audited financial statements by LCL will be provided at the November Board Meeting
- Auctioning off old vehicles, please review the revenue in the staff reports
- Attending AICPA and Gear Up conferences in October and December
- Working on freedom of information request

SUMMARY OF CASH ACCOUNTS
September, Fiscal Year 2017-2018
Carolyn Weeks CPA, Director of Fiscal Operations

	JUL	AUG	SEP	OCT	NOV	DEC	JAN	FEB	MAR	APR	MAY	JUN
COUNTY TREASURY -1010.0												
Fund Balance - 6/30/17 \$239,491.53												
Deposits/Revenues	205,337	122,546	956	-	-	-	-	-	-	-	-	-
YTD	205,337	327,883	328,838	328,838	328,838	328,838	328,838	328,838	328,838	328,838	328,838	328,838
Transfer to LAIF 1020.0	-	-	-	-	-	-	-	-	-	-	-	-
YTD	-	-	-	-	-	-	-	-	-	-	-	-
Fund Balance	\$ 444,828	\$ 567,374	\$ 568,330	\$ 568,330	\$ 568,330	\$ 568,330	\$ 568,330	\$ 568,330	\$ 568,330	\$ 568,330	\$ 568,330	\$ 568,330
LAIF ACCOUNT - 1020.0												
Fund Balance - 6/30/17 \$6,494,734.50												
Deposits (Transfer from County Treasury 1010 or Reserve accounts)												
Interest Earned	17,944	-	-	-	-	-	-	-	-	-	-	-
YTD	17,944	17,944	17,944	17,944	17,944	17,944	17,944	17,944	17,944	17,944	17,944	17,944
Withdrawals (Transfer to BPB Payable 1016)	-	900,000	-	-	-	-	-	-	-	-	-	-
YTD	-	900,000	-	-	-	-	-	-	-	-	-	-
Withdrawals (Transfer to BPB Payable 1018)	2,720,000	560,000	850,000	-	-	-	-	-	-	-	-	-
YTD	2,720,000	560,000	850,000	-	-	-	-	-	-	-	-	-
Withdrawals (Transfers to Reserve Accounts)	-	-	-	-	-	-	-	-	-	-	-	-
YTD	-	-	-	-	-	-	-	-	-	-	-	-
Fund Balance	\$ 3,792,678	\$ 2,332,678	\$ 1,482,678	\$ 1,482,678	\$ 1,482,678	\$ 1,482,678	\$ 1,482,678	\$ 1,482,678	\$ 1,482,678	\$ 1,482,678	\$ 1,482,678	\$ 1,482,678
AB ACCOUNTS PAYABLE 1016.0												
Fund Balance - 6/30/17 \$153,240.80												
Deposits (Transfer from LAIF 1020)	-	900,000	-	-	-	-	-	-	-	-	-	-
YTD	-	900,000	-	-	-	-	-	-	-	-	-	-
Deposits (Transfer from BPB Payroll 1018)	300,000	140,000	250,000	-	-	-	-	-	-	-	-	-
YTD	300,000	140,000	250,000	-	-	-	-	-	-	-	-	-
Misc. Receipts	12,792	10,860	11,100	-	-	-	-	-	-	-	-	-
YTD	12,792	10,860	11,100	-	-	-	-	-	-	-	-	-
Withdrawals (Transfers to BPB Payroll 1018)	312,792	1,363,652	1,624,752	1,624,752	1,624,752	1,624,752	1,624,752	1,624,752	1,624,752	1,624,752	1,624,752	1,624,752
YTD	312,792	1,363,652	1,624,752	1,624,752	1,624,752	1,624,752	1,624,752	1,624,752	1,624,752	1,624,752	1,624,752	1,624,752
Withdrawals for Payables	-	175,000	-	-	-	-	-	-	-	-	-	-
YTD	-	175,000	-	-	-	-	-	-	-	-	-	-
Withdrawals for Payables	321,227	894,694	245,773	-	-	-	-	-	-	-	-	-
YTD	321,227	894,694	245,773	-	-	-	-	-	-	-	-	-
Account Balance	\$ 144,806	\$ 125,971	\$ 141,298	\$ 141,298	\$ 141,298	\$ 141,298	\$ 141,298	\$ 141,298	\$ 141,298	\$ 141,298	\$ 141,298	\$ 141,298
AB PAYROLL ACCOUNT 1018.0												
Fund Balance - 6/30/16 \$2,221,616.18												
Deposits (Transfer from LAIF 1020)	2,720,000	560,000	850,000	-	-	-	-	-	-	-	-	-
YTD	2,720,000	560,000	850,000	-	-	-	-	-	-	-	-	-
Deposits (Transfer from BPB Payable 1016)	-	175,000	-	-	-	-	-	-	-	-	-	-
YTD	-	175,000	-	-	-	-	-	-	-	-	-	-
Withdrawals for Payroll	2,720,000	3,455,000	4,305,000	4,305,000	4,305,000	4,305,000	4,305,000	4,305,000	4,305,000	4,305,000	4,305,000	4,305,000
YTD	2,720,000	3,455,000	4,305,000	4,305,000	4,305,000	4,305,000	4,305,000	4,305,000	4,305,000	4,305,000	4,305,000	4,305,000
Withdrawals (Transfer to BPB Payable 1016)	826,026	637,983	598,722	-	-	-	-	-	-	-	-	-
YTD	826,026	637,983	598,722	-	-	-	-	-	-	-	-	-
Withdrawals (Transfer to BPB Payable 1016)	3,960,000	140,000	250,000	-	-	-	-	-	-	-	-	-
YTD	3,960,000	140,000	250,000	-	-	-	-	-	-	-	-	-
Account Balance	\$ 155,590	\$ 112,607	\$ 113,885	\$ 113,885	\$ 113,885	\$ 113,885	\$ 113,885	\$ 113,885	\$ 113,885	\$ 113,885	\$ 113,885	\$ 113,885

SUMMARY OF CASH ACCOUNTS
September, Fiscal Year 2017-2018
Carolyn Weeks CPA, Director of Fiscal Operations

	JUL	AUG	SEP	OCT	NOV	DEC	JAN	FEB	MAR	APR	MAY	JUN
CalTRUST Account Cash Flow - 1019.0												
Fund Balance - 6/30/18 \$0												
Deposits	1,500,000		-	-	-	-	-	-	-	-	-	-
Interest Earned	-	542	2,279	-	-	-	-	-	-	-	-	-
YTD	1,500,000	1,500,542	1,502,821	1,502,821	1,502,821	1,502,821	1,502,821	1,502,821	1,502,821	1,502,821	1,502,821	1,502,821
Withdrawals	-	-	-	-	-	-	-	-	-	-	-	-
Administrative Expenses	-	-	-	-	-	-	-	-	-	-	-	-
YTD	-	-	-	-	-	-	-	-	-	-	-	-
Fund Balance	\$ 1,500,000	\$ 1,500,542	\$ 1,502,821	\$ 1,502,821	\$ 1,502,821	\$ 1,502,821	\$ 1,502,821	\$ 1,502,821	\$ 1,502,821	\$ 1,502,821	\$ 1,502,821	\$ 1,502,821
VCJPA TRUST FUND - 1012.0												
Fund Balance - 6/30/17 \$896,390.76												
Deposits												
Interest Earned												
YTD												
Withdrawals												
Administrative Expenses												
YTD												
Fund Balance	\$ 896,391	\$ 896,391	\$ 896,391	\$ 896,391	\$ 896,391	\$ 896,391	\$ 896,391	\$ 896,391	\$ 896,391	\$ 896,391	\$ 896,391	\$ 896,391
VCJPA PROPERTY - 1013.0												
Fund Balance - 6/30/17 \$51,475.00												
Deposits												
Interest Earned												
YTD												
Withdrawals												
Administrative Expenses												
YTD												
Fund Balance	\$ 51,475	\$ 51,475	\$ 51,475	\$ 51,475	\$ 51,475	\$ 51,475	\$ 51,475	\$ 51,475	\$ 51,475	\$ 51,475	\$ 51,475	\$ 51,475
CalTRUST ACCOUNT EMERGENCY VECTOR CONTROL RESERVES- 1031.0												
Fund Balance - 6/30/17 \$1,200,000.00												
Deposits (Transfers from 1020.0)												
Interest Earned		2,125	537									
YTD		2,125	2,662	2,662	2,662	2,662	2,662	2,662	2,662	2,662	2,662	2,662
Withdrawals												
YTD												
Fund Balance	\$ 1,200,000	\$ 1,202,125	\$ 1,202,662	\$ 1,202,662	\$ 1,202,662	\$ 1,202,662	\$ 1,202,662	\$ 1,202,662	\$ 1,202,662	\$ 1,202,662	\$ 1,202,662	\$ 1,202,662
LAIF ACCOUNT MEU VEHICLE REPLACEMENT - 1023.0												
Fund Balance - 6/30/1 \$0												
Deposits (Transfers from 1020.0)												
Interest Earned												
YTD												
Withdrawals												
YTD												
Fund Balance	\$ -	\$ -	\$ -	\$ -	\$ -	\$ -	\$ -	\$ -	\$ -	\$ -	\$ -	\$ -
LAIF ACCOUNT CAPITAL DESIGNATED RESERVES - 1025.0												
Fund Balance - 6/30/17 \$125,850.00												
Deposits (Transfers from 1020.0)												
Interest Earned												
YTD												
Withdrawals												
YTD												
Fund Balance	\$ 125,850	\$ 125,850	\$ 125,850	\$ 125,850	\$ 125,850	\$ 125,850	\$ 125,850	\$ 125,850	\$ 125,850	\$ 125,850	\$ 125,850	\$ 125,850

SUMMARY OF CASH ACCOUNTS
September, Fiscal Year 2017-2018
Carolyn Weeks CPA, Director of Fiscal Operations

	JUL	AUG	SEP	OCT	NOV	DEC	JAN	FEB	MAR	APR	MAY	JUN
CalTrust Account Operations Designated Reserves - 1033.0												
Fund Balance - 6/30/17 \$400,000.00												
Deposits (Transfers from 1020.0)	-	683	179	-	-	-	-	-	-	-	-	-
Interest Earned	-	683	862	862	862	862	862	862	862	862	862	862
YTD	-	683	862	862	862	862	862	862	862	862	862	862
Withdrawals	-	-	-	-	-	-	-	-	-	-	-	-
YTD	-	-	-	-	-	-	-	-	-	-	-	-
Fund Balance	\$ 400,000	\$ 400,683	\$ 400,862	\$ 400,862	\$ 400,862	\$ 400,862	\$ 400,862	\$ 400,862	\$ 400,862	\$ 400,862	\$ 400,862	\$ 400,862
LAIF Account OPEB Designated Reserves - 1027.0												
Fund Balance - 6/30/17 \$300,696												
Deposits (Transfers from 1020.0)	-	-	-	-	-	-	-	-	-	-	-	-
Interest Earned	-	-	-	-	-	-	-	-	-	-	-	-
YTD	-	-	-	-	-	-	-	-	-	-	-	-
Withdrawals	-	-	-	-	-	-	-	-	-	-	-	-
YTD	-	-	-	-	-	-	-	-	-	-	-	-
Fund Balance	\$ 300,696	\$ 300,696	\$ 300,696	\$ 300,696	\$ 300,696	\$ 300,696	\$ 300,696	\$ 300,696	\$ 300,696	\$ 300,696	\$ 300,696	\$ 300,696
CalTrust Account Capital Reserves - 1032.0												
Fund Balance - 6/30/17 \$360,000.00												
Deposits (Transfers from 1020.0)	-	645	161	-	-	-	-	-	-	-	-	-
Interest Earned	-	645	806	806	806	806	806	806	806	806	806	806
YTD	-	645	806	806	806	806	806	806	806	806	806	806
Withdrawals	-	-	-	-	-	-	-	-	-	-	-	-
YTD	-	-	-	-	-	-	-	-	-	-	-	-
Fund Balance	\$ 360,000	\$ 360,645	\$ 360,806	\$ 360,806	\$ 360,806	\$ 360,806	\$ 360,806	\$ 360,806	\$ 360,806	\$ 360,806	\$ 360,806	\$ 360,806
CalTrust Account Vehicle Replacement - 1034.0												
Fund Balance - 6/30/16 \$200,000.00												
Deposits (Transfers from 1020.0)	-	-	89	-	-	-	-	-	-	-	-	-
Interest Earned	-	342	431	431	431	431	431	431	431	431	431	431
YTD	-	342	431	431	431	431	431	431	431	431	431	431
Withdrawals	-	-	-	-	-	-	-	-	-	-	-	-
YTD	-	-	-	-	-	-	-	-	-	-	-	-
Fund Balance	\$ 200,000	\$ 200,342	\$ 200,431	\$ 200,431	\$ 200,431	\$ 200,431	\$ 200,431	\$ 200,431	\$ 200,431	\$ 200,431	\$ 200,431	\$ 200,431
CASH BALANCE	\$ 6,512,314	\$ 5,114,067	\$ 4,281,895	\$ 4,281,895	\$ 4,281,895	\$ 4,281,895	\$ 4,281,895	\$ 4,281,895	\$ 4,281,895	\$ 4,281,895	\$ 4,281,895	\$ 4,281,895

This above information is provided in compliance with the District's Investment Policy.

MONTHLY EXPENSE STATEMENT
September, Fiscal Year 2017-2018
Carolyn M. Weeks CPA, Director of Fiscal Operations

ACCOUNT	ACTUAL MONTHLY EXPENSE (\$)	BUDGETED MONTHLY EXPENSE (\$)	MONTHLY VARIANCE (\$)	YTD ACTUAL EXPENSE (\$)	YTD BUDGETED EXPENSE (\$)	YTD VARIANCE (\$)
<u>Salaries and Benefits</u>						
Regular & Limited Term Salaries	\$ 457,045	\$ 487,904	\$ 30,859	\$ 1,404,011	\$ 1,464,012	\$ 60,001
Employee Taxes	11,556	12,802	1,246	39,761	38,331	(1,430)
Extra Help Salaries	50,803	72,000	21,197	164,157	215,000	50,843
General Benefits	77,960	84,654	6,694	547,581	559,675	12,093
Health Benefits	117,610	135,950	18,339	381,036	407,849	26,813
SUBTOTAL	\$ 714,975	\$ 793,310	\$ 78,335	\$ 2,536,545	\$ 2,684,866	\$ 148,321
<u>Services and Supplies</u>						
Chemicals	\$ -	\$ 8,600	\$ 8,600	\$ 16,874	\$ 53,100	\$ 36,226
Operational Support Equipment	-	1,898	1,898	1,708	8,669	6,960
Uniforms and Accessories	298	7,603	7,305	7,063	18,270	11,207
Communications	-	9,198	9,198	9,733	27,593	17,861
Kitchen Materials and Supplies	-	108	108	237	325	88
VCJPA Insurance	-	-	-	523,907	522,516	(1,391)
Maintenance: Automotive	2,255	8,800	6,545	13,785	40,700	26,915
Office Equipment	1,280	4,110	2,830	9,490	9,245	(245)
Maintenance: Bldgs/Yards	5,680	9,852	4,172	13,934	24,936	11,003
Scientific-Technical Lab Supplies	-	1,500	1,500	12,157	5,490	(6,667)
Memberships	-	-	-	15,466	14,500	(966)
Office Expense	4,996	7,417	2,420	15,953	28,275	12,322
Professional Services	9,819	15,900	6,081	37,813	44,800	6,987
Public Information & Education	-	1,600	1,600	11,256	11,150	(106)
Special Expense	0	4,200	4,200	21,957	36,950	14,993
Transportation & Travel	3,211	4,745	1,534	16,652	24,104	7,452
Fuel	15,432	20,034	4,601	41,695	60,878	19,183
Utilities	8,287	11,633	3,347	25,893	34,300	8,407
SUBTOTAL	\$ 51,260	\$ 117,198	\$ 65,938	\$ 795,572	\$ 965,802	\$ 170,230
<u>Fixed Assets</u>						
Automotive/Specialty Vehicles	\$ -	-	\$ -	\$ 1,000	2,950	\$ 1,950
Machinery & Equipment	-	-	-	2,999	-	(2,999)
Spray Equipment	-	-	-	-	-	-
Computer Equipment	-	-	-	5,615	-	(5,615)
Laboratory Equipment	-	-	-	-	-	-
Public Information/Ed. Equipment	-	-	-	-	-	-
Furniture & Fixtures	-	-	-	-	-	-
Capital Improvements	-	-	-	-	-	-
SUBTOTAL	\$ -	\$ -	\$ -	\$ 9,613	\$ 2,950	\$ (6,663)
<u>Reserves</u>						
Capital Reserve Fund	\$ -	-	\$ -	\$ -	-	\$ -
MEU (Vecmobile) Replacement Res.	-	-	-	-	-	-
SUBTOTAL	\$ -	\$ -	\$ -	\$ -	\$ -	\$ -
TOTAL EXPENDITURES	\$ 766,235	\$ 910,509	\$ 144,274	\$ 3,341,730	\$ 3,653,618	\$ 311,888

2018

^ Miscellaneous income is composed of LAIF interest, proceeds from the sale of assets, contract proceeds, rebates, grants and any other income that is not listed above.

GREATER LOS ANGELES VECTOR CONTROL DISTRICT

Chart of Financial Activity: FY 2018

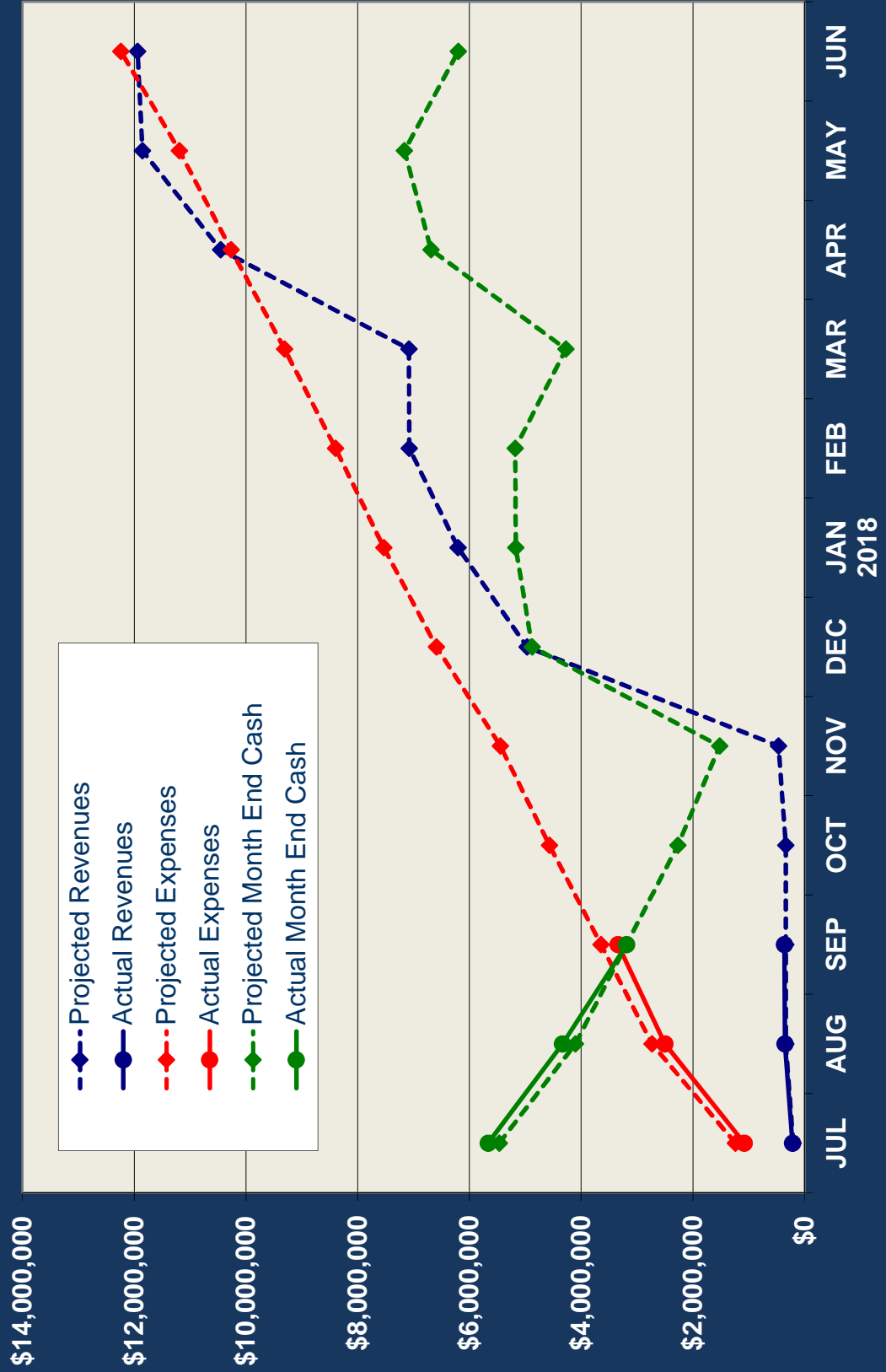
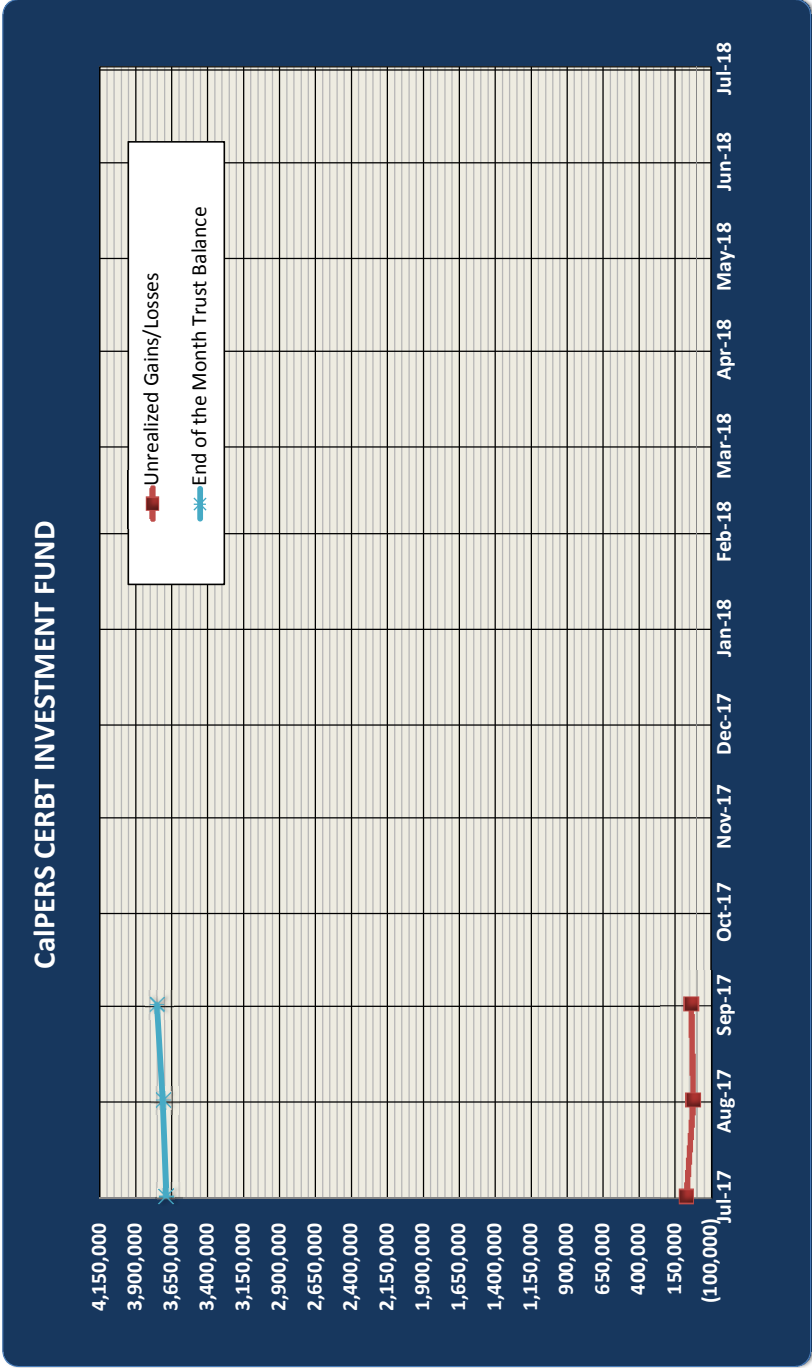


TABLE FOR CHART JULY 2017 - JUNE 2018

Month	Projected Revenues	Actual Revenues	Projected Expenses	Actual Expenses	Projected Month End Cash	Actual Month End Cash
JUL	205,000	217,713	1,238,871	1,082,479	5,466,129	5,664,735
AUG	335,000	350,950	2,733,700	2,500,830	4,101,300	4,333,220
SEP	335,500	363,006	3,644,209	3,341,730	3,191,291	3,185,340
OCT	337,500	0	4,568,596	0	2,268,904	0
NOV	467,500	0	5,445,954	0	1,521,547	0
DEC	4,967,500	0	6,590,991	0	4,876,510	0
JAN 2018	6,202,500	0	7,531,633	0	5,170,868	0
FEB	7,077,500	0	8,396,204	0	5,181,297	0
MAR	7,084,300	0	9,310,231	0	4,274,071	0
APR	10,454,300	0	10,265,544	0	6,688,758	0
MAY	11,854,300	0	11,191,272	0	7,163,028	0
JUN	11,939,300	0	12,238,200	0	6,201,100	0

SUMMARY of CalPERS CERBT INVESTMENT FUND
 August, Fiscal Year 2017-2018
 Carolyn Weeks, CPA, Director of Fiscal Operations

CalPERS CERBT Plan for Pre-Funding OPEB Fund Balance - 6/30/17 \$3,013,705	JUL	AUG	SEP	OCT	NOV	DEC	JAN	FEB	MAR	APR	MAY	JUN
Deposits	600,000	-	-	-	-	-	-	-	-	-	-	-
YTD Deposits	600,000	600,000	600,000	600,000	600,000	600,000	600,000	600,000	600,000	600,000	600,000	600,000
Unrealized Gains/Losses	72,961	25,745	39,992	-	-	-	-	-	-	-	-	-
YTD Unrealized Gains/Losses	72,961	98,706	138,698	138,698	138,698	138,698	138,698	138,698	138,698	138,698	138,698	138,698
Administrative Fees	248	266	261	-	-	-	-	-	-	-	-	-
YTD Administrative Fees	248	513	774	774	774	774	774	774	774	774	774	774
Fund Balance	\$ 3,686,419	\$ 3,711,898	\$ 3,751,628	\$ 3,751,628	\$ 3,751,628	\$ 3,751,628	\$ 3,751,628	\$ 3,751,628	\$ 3,751,628	\$ 3,751,628	\$ 3,751,628	\$ 3,751,628





STAFF REPORT E

GREATER LOS ANGELES COUNTY VECTOR CONTROL DISTRICT HUMAN RESOURCES DEPARTMENT REPORT SEPTEMBER 2017

Rakesha L. Thomas, Director of Human Resources
Shenell Benson-Williams, Human Resources Assistant

I. Employment & Recruiting

- a. Facilities/Fleet Maintenance Supervisor – Open Until Filled
- b. ELC Grant Recruitment – Aedes Technicians Hired

II. Benefits Update

- a. Open Enrollment (Sept 11th – Oct 6th)
- b. Health of Plan Discussion – 457 Def Comp
- c. Benefit Orientation (9/22/2017)

III. Department Training & Workshops

Date	Workshop	Topic	Location
9/06/2017	Cal Chamber	HR Boot Camp	Los Angeles
9/07/2017	LCW Consortium	Max. Supervisor Skills/Front Line	Lakewood
9/13/2017	PIHRA	Board Meeting	Los Alamitos
9/21/2017	Quarterly Safety Meeting	Safety Committee – Various Topics	District

IV. Worker's Compensation Update

- a. Injuries (1) – No time loss; modified work