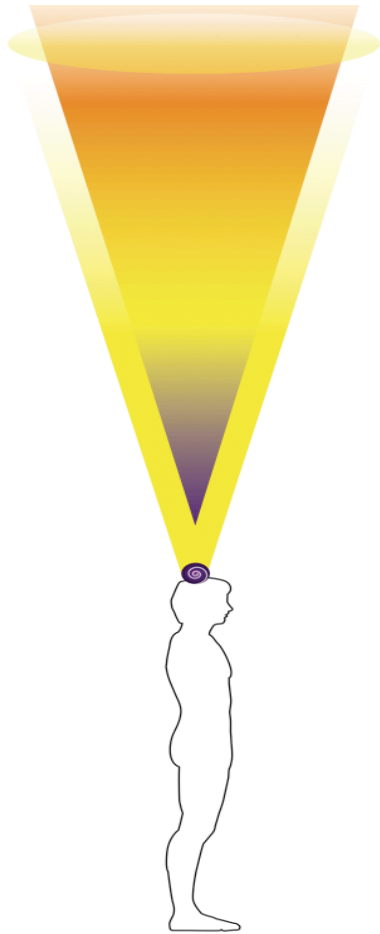


Channeling Energy



When you'd like to receive energy healing, or deliver it to a client, you'll remain in the merged state in the top of the cylinder, calling the healing frequencies into the cylinder. The energies will fill the cylinder, touching your crown chakra.

From Cylinder to Hand

When energy healing is delivered, the frequency is moved from the cylinder, touching into the crown and then migrating directly to the hands.

There is no need, (nor is it hygienic), to bring energy down through your body to your arms and out your hands.

