



Systematic coating solutions for:

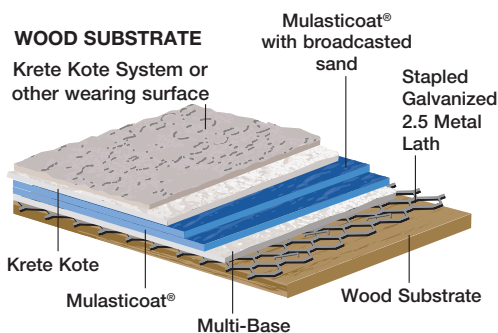
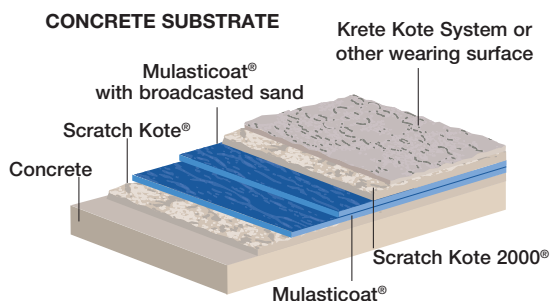
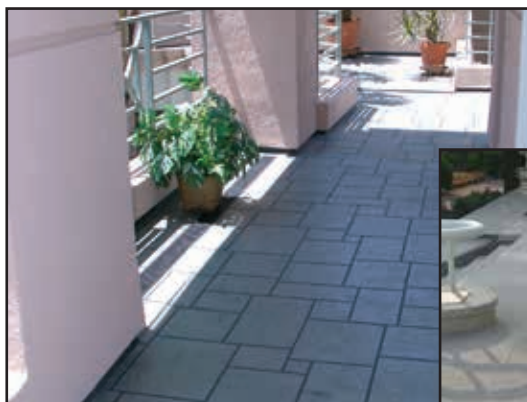
Concrete Restoration, Stucco  
Waterproofing, Sealants,  
& Pool Restoration.





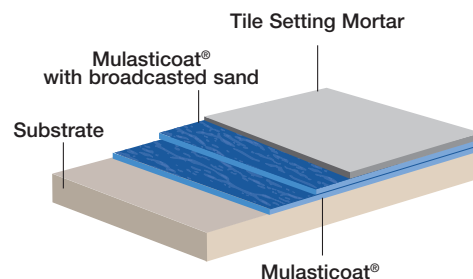
## ABOVE GRADE WATERPROOFING

The METAL LATHE WATERPROOFING SYSTEM is a multi-layer, protective coating which combines an elastomeric waterproofing membrane (Mulasticoat®) with a reinforced latex modified cementitious top coating (Krete Kote System). This system is designed to withstand heavy foot traffic on walkways, decks, ramps, balconies, roofs, etc. The system was designed to be applied to wood substrates in need of a waterproofing and/or fire resistant protective coating.



## WATERPROOFING UNDERLAYMENT & CRACK SUPPRESSANT FOR TILE

The UNDERLAYMENT WATERPROOFING SYSTEM is a multi-layer protective, waterproofing, and crack suppressant system. The main component of this system is our MULASTICOAT® waterproofing, which is a roll-on, cold applied, elastomeric waterproofing membrane. Ideally suited for applications under tile.



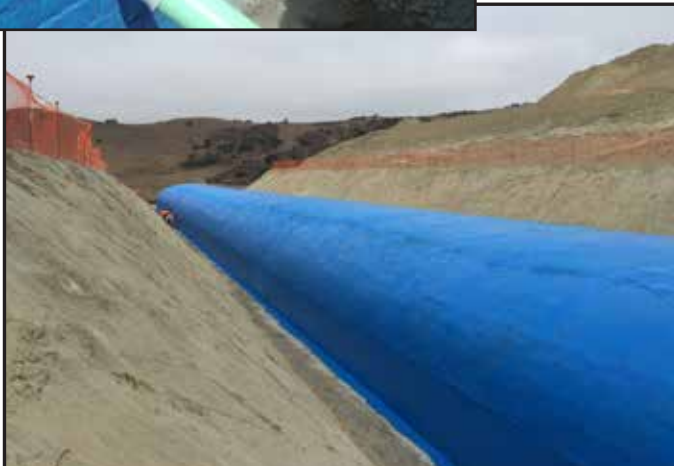
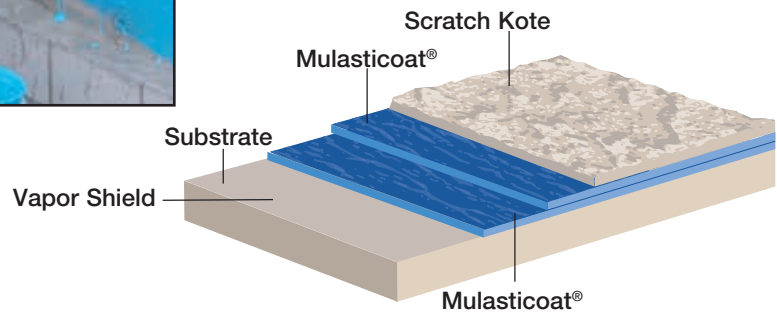




## PREMIUM BELOW GRADE WATERPROOFING



The SLATEX BELOW GRADE WATERPROOFING SYSTEM is the premier below grade waterproofing system. This system incorporates MULASTICOAT®, a cold applied, waterproofing membrane. It is used in conjunction with SCRATCH KOTE 2000®, a polymer modified cement coating which acts as the protective shell.

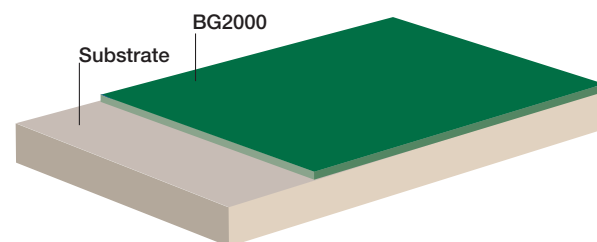




## ONE COAT BELOW GRADE WATERPROOFING



BG2000 is a single component, cold applied, waterproofing membrane that can be rolled or sprayed. Thickness can be adjusted as needed from 15 mil to 120 mil depending upon the project's requirements. Water based, so clean up is a breeze. Forms a tough, rubber like membrane that stops water. BG2000 forms a "rubber like" heavy duty membrane that can have back fill directly against it. Ideal for applications over block, poured in place concrete, Insulated Concrete Form and most masonry substrates. Fifty-five gallon drums and 275-gallon totes are available for those with commercial spray equipment. For maximum results we recommend the Lasto Drain Board System.



## LASTO DRAINAGE SYSTEM

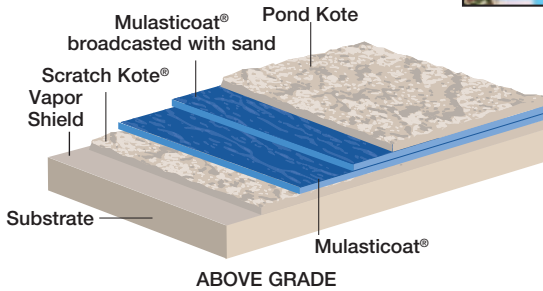
LASTO DRAINAGE SYSTEM is a combination of drainage mats and drainage systems. Designed to move water away from below grade walls. Replaces drain board and pipe and gravel systems.





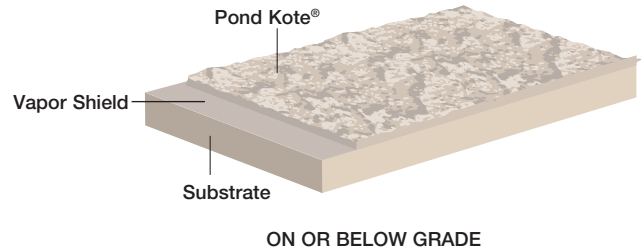
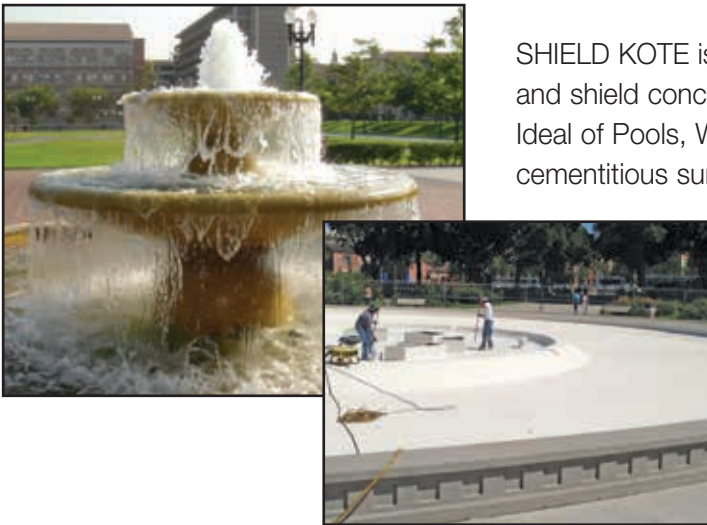
# WATER FEATURE WATERPROOFING

This waterproofing system is ideal for ponds and water features. MULASTICOAT® forms an elastic waterproof membrane while POND KOTE forms a hard durable protective layer.



## SHIELD KOTE

SHIELD KOTE is a system used to internally strengthen, seal and shield concrete water features against water penetration. Ideal of Pools, Water Features, Ponds, Fountains and other cementitious surfaces.



## AQUA PROOF

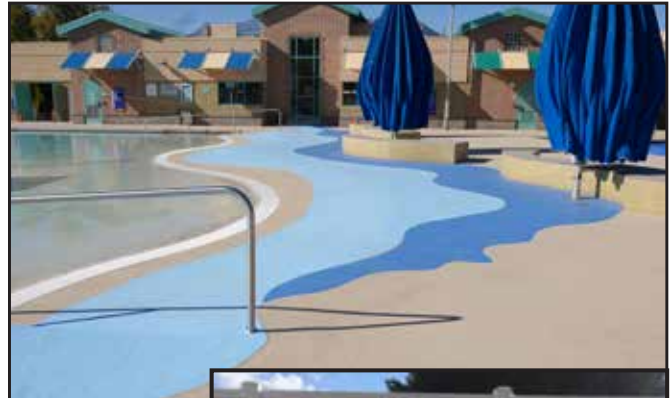


AQUA PROOF is a unique Do-It-Yourself, easy to apply waterproofing material designed for small residential water features, ornamental ponds and more. It is furnished in a ready-to-use gallon can in a variety of colors. Application is by standard paint roller or brush. Ideal for areas less than 100 Sq. Ft. Water based for easy clean up.



## KRETE KOTE SYSTEM

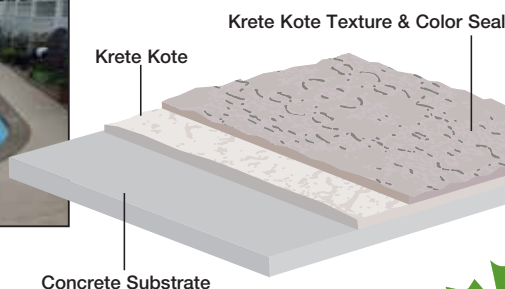
KRETE KOTE is the system of choice for restoration of old concrete or to add beauty to freshly placed concrete. A super bonding, flexible, cementitious coating which forms a cost-effective, durable, cool, anti-skid, weather and chemical resistant surface over properly prepared substrates. It can be applied to pool decks, driveways, walkways, steps, concrete decks, buildings, bridges, etc. The most popular design is the French Lace (Knock Down - Cool Deck) pattern. Other design options include the Multi-Stain finishes and stencil patterns such as slate, stone, tile, brick, marble, etc. The system is completed with two coats of our Acrathane Colorseal to seal and protect the Krete Kote system.



BEFORE

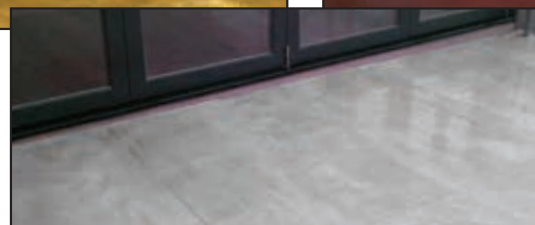
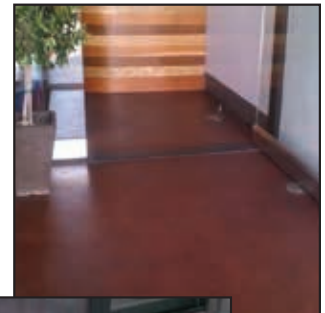
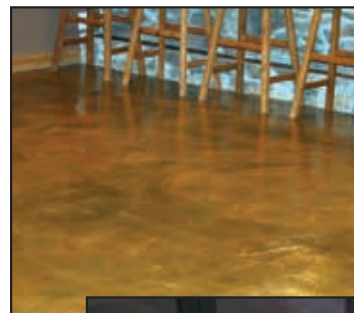
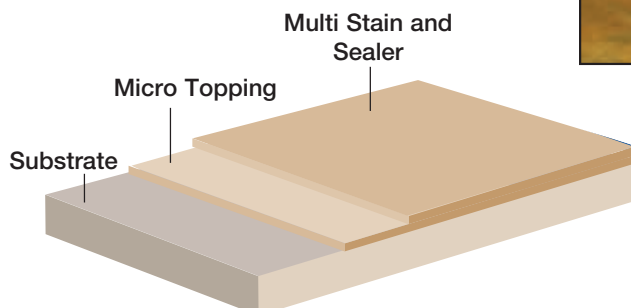


AFTER



## MICRO TOPPING

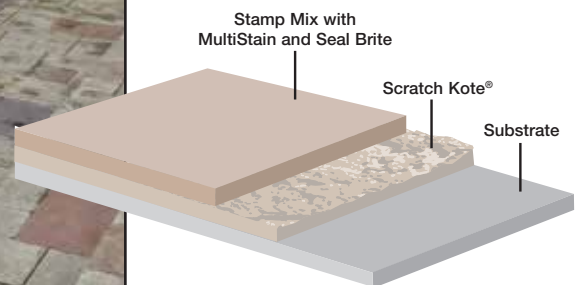
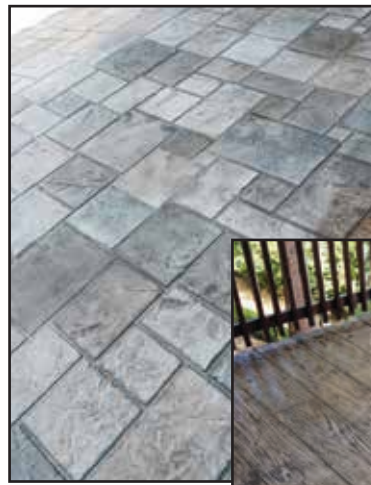
**MICRO TOPPING** is an interior cementitious coating comprised of cement based materials in conjunction with a series of clear epoxy resins and sealers. Ideal for high foot traffic areas. The abuse resistance of these products makes this a perfect selection for most interior applications.





# STAMPABLE OVERLAY

OVERLAY STAMP MIX is a latex based, cementitious coating that is applied to existing concrete slabs. Imprinting of the pattern is achieved through the use of texturing mats which creates the stamped concrete image.



DECORATIVE CONCRETE



## CONCRETE STAIN

**MULTI-STAIN** is a penetrating, translucent, stain, that can be used on most concrete surfaces. The use of a Clear Sealer is recommended to lock in the color and seal the application.



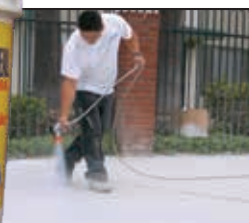
## EPOXY & URETHANE SEALERS

**ACRATHANE CLEAR SEAL** is also available in a water based formula which is designed for application over pavers and other masonry units. Ideally suited for application over Multi-Stain.

**MICRO TOPPING CLEAR SEALER SYSTEM** is comprised of two components; an epoxy filler and a clear aliphatic top coat finish for interior applications. The epoxy fills in the surface for a smoother feel and the clear locks everything into place. Furnished in a kit with Part "A" and "B" mixed together on the job. Especially suited for application over our Micro Topping System. We also have Metallic Epoxy Systems (PM100) as well as Colored Epoxy Systems (PM200) which can be used for a wide range of interior applications.



## ACRATHANE COLORSEAL



**ACRATHANE COLORSEAL** is a water based, pre-colored, acrylic sealer designed for application over our Krete Kote System or can be used to seal old "cool deck" type surfaces. Material can be rolled or sprayed with an airless sprayer. Pool decks are the ideal application for this product. With the high solid content of this material it makes the Acrathane Colorseal the material of choice to withstand the rigorous conditions found on pool decks. This product has been sold for 25 plus years and has millions of square feet successfully installed. Its' water based so clean up is easily done. Product is available in 25 standard colors and custom colors can be achieved as well. Can be used on most masonry surfaces both vertical and horizontal.



# NON ENHANCING SEALER FOR STAIN RESISTANCE ON STONE, PAVERS, & MASONRY SUBSTRATES



PAINTS, STAINS AND SEALERS



MULTI-GUARD SEAL 2000 is a clear, penetrating, breathable, VOC compliant, water, oil and graffiti, and stain resistant sealer for porous tile, grout, and natural stone. It does not alter the appearance of the surface. MULTI-GUARD SEAL 2000 penetrates the surface and bonds chemically to the substrate, resulting in years of protection by reducing the ingress of water-borne and oil based contaminants into the surface. MULTI-GUARD SEAL 2000 is an excellent choice for treatment around areas where food products, such as mustard, oils, grease, wine, etc., are present.

## COLOR ENHANCING SEALER FOR STONE, PAVERS & MASONRY SUBSTRATES

SEAL BRITE is a clear solvent sealer comprised of a solution of 100% methacrylate polymers for enhancing and protecting decorative concrete, pavers, natural stones, travertine stone, concrete overlays and other similar masonry substrates. Seal Brite provides increased protection against water intrusion and freeze/thaw cycles, chemical erosion, de-icing salts, and yellowing. This material will have a shimmering gloss appearance and will enhance the color of the substrate and make the area more vibrant in color. Seal Brite is also furnished in a VOC compliant version (SEAL BRITE – CA) for those geographical areas that mandate low VOC materials to be used.



*Dark area has been sealed.*



## ULTRA VIOLET SEALER

MULTICOAT'S UV CLEAR SEALER is a 100% Active aliphatic UV Clear sealer that's rapidly dried with a special Ultra Violet Light Machine. It is used to provide a low maintenance finished surface while yielding a desirable unique reflective gloss finish with quick installation. The finished surface is resistant to oil, grease, and most commonly used cleaning chemicals and detergents. Ideally used for interior use on high traffic commercial areas such as schools, churches, restaurants, warehouses, garages, etc. No down time as the surface is ready for use immediately after exposure to the UV light source.



## FAST SET REPAIR MORTAR

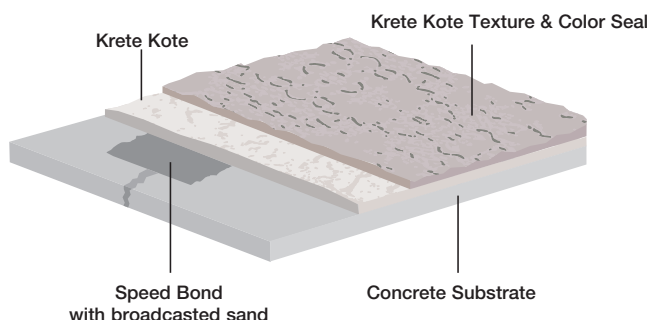
SPEED MIX repair mortar is a rapid set, high early strength, hydraulic cement that allows for quick repairs.

Ideal for use under the KRETE KOTE System or as a stand-alone material.



## CRACK REPAIR SYSTEM

SPEED BOND is a quick set, fast curing, super bonding, flexible concrete crack repair material. It is self-leveling and used to repair cracks and small holes prior to the application of the KRETE KOTE System or other MULTICOAT systems. It is also ideal as an anchoring material.





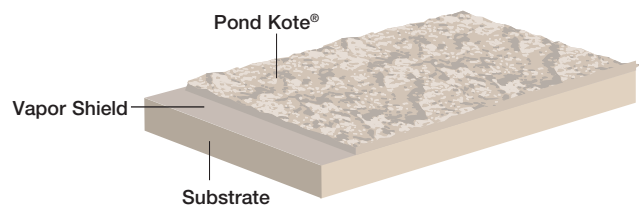
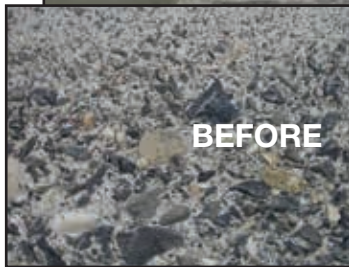
# FISH HATCHERY RESTORATION AND INDUSTRIAL UNDERWATER CONCRETE APPLICATIONS



CONCRETE RESTORATION



POND KOTE is designed for Fish Hatchery Restoration. Rough walls promote deadly bacteria and damage fish. POND KOTE protects the concrete and smoothes out the wall making it safer for the fish and makes cleaning the surface much easier. Also used for industrial concrete repair in applications such as: processing plants, chemical and other manufacturing facilities which require a quick repair method to limit down time. Ideally used in conjunction with our Vapor Shield as the SHIELD KOTE SYSTEM used inside of pools which need an extra layer of water resistance added to the shell.



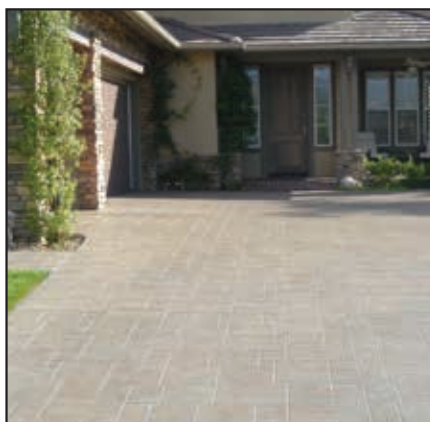
## ACRYLIC ADD MIXTURE

LIQUID CATALYST is a polymer add mixture for cement based products. LIQUID CATALYST (or Glue as some contractors refer to it) helps cement based products stick better to the substrate and adds internal strength and some water repellency to these products.

## VAPOR SHIELD

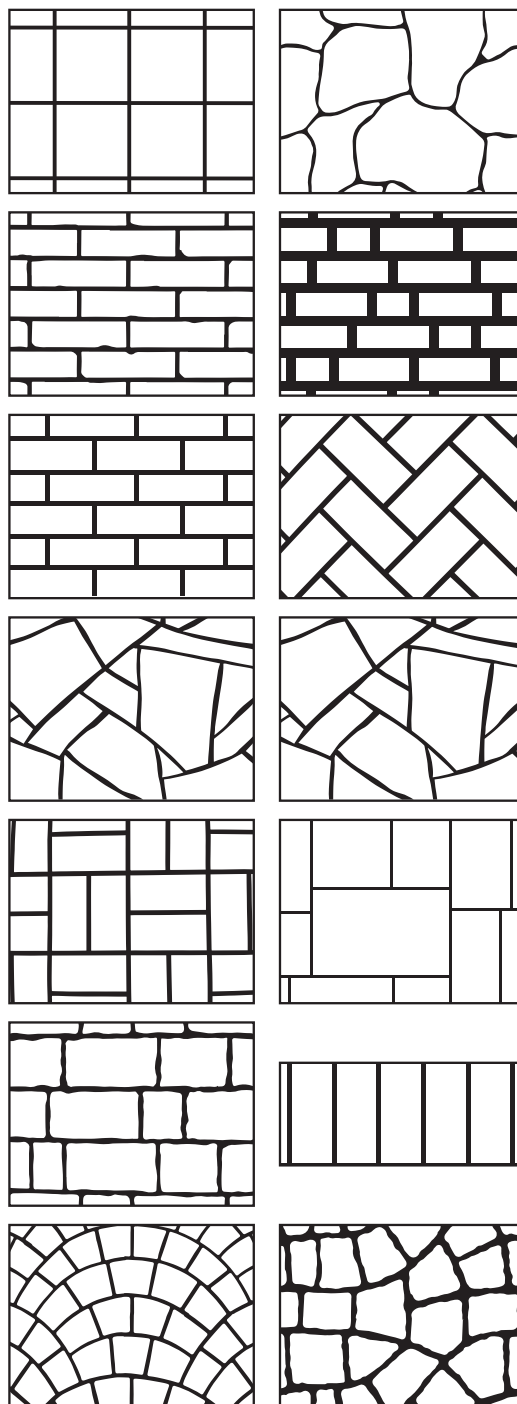
Vapor Shield is a Cure and Seal, Hardener and Densifier all in one. It will strengthen and internally waterproof cementitious materials, block vapor transmission yet leaves the concrete breathable. VAPOR SHIELD purges soluble chlorides and prevents their re-entry. It does not alter bonding of subsequent coatings. Reduces the "green concrete" window to an average of 5 days. Easy to apply and environmentally friendly. Ideal for gunnite and shotcrete swimming pool shells.





## MASONRY STENCIL PATTERNS

Creating patterns on horizontal or vertical surfaces is made easy with disposable stencils. Flat stencil pieces are backed with an adhesive that temporarily sticks to the surface which reduces the amount of product seeping under the stencil. Flat sheets have no memory and will not curl. Sized for a one person application. Available in various thicknesses, with or without adhesive. Custom patterns are available.



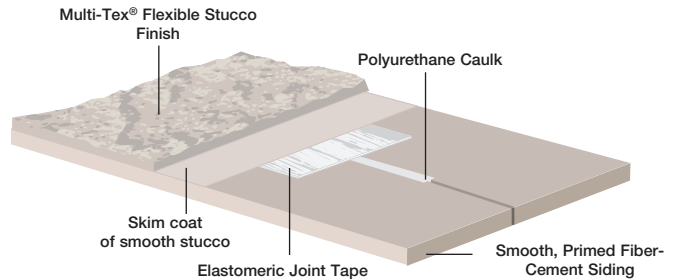
These are just a few of our patterns, many more are available.



## MULTI-TEX STUCCO SYSTEMS

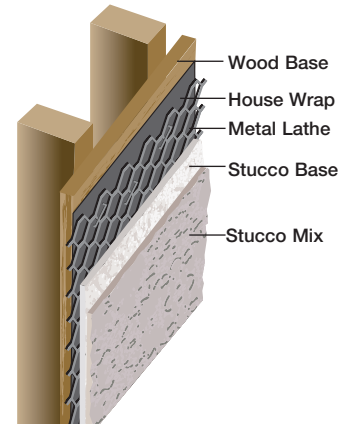
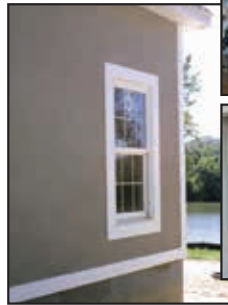
The MULTI-TEX® STUCCO SYSTEM consists of a high build flexible acrylic emulsion applied to smooth, primed, fiber-cement panel. It forms a cost-effective, durable weather-resistant exterior stucco finished wall, installed on wood or steel frame, residential or commercial structures.

MULTI-TEX® is a one-coat stucco system, designed for its cost effectiveness as well as its ease of application. Stucco base is also available in an Elastomeric (MULTI-LASTIC) finish grade which is applied the same as our Multi-Tex finish system.

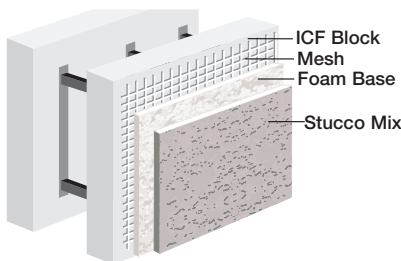


## HARD COAT STUCCO SYSTEM

The HARD COAT STUCCO SYSTEM is a traditional "lathe and plaster" which is comprised of our acrylic modified STUCCO BASE troweled over metal lathe. Then our flexible acrylic based synthetic STUCCO FINISH is applied and textured to the desired finish.



## ICF & EIFS STUCCO SYSTEM



Multicoat has developed coatings for Insulated Concrete Form Systems that provide an impact resistant exterior stucco finish for commercial and residential uses.



## FLEXIBLE ACRYLIC & ELASTOMERIC STUCCO FINISH

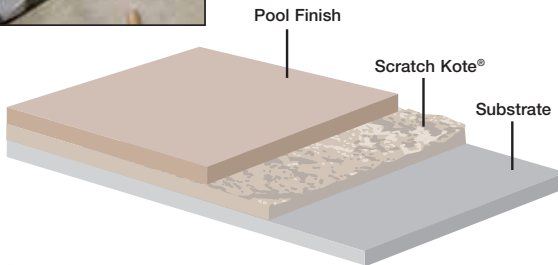
Multicoat's Acrylic and Elastomeric Stucco Mix can be used for a variety of stucco applications. It is furnished in a neutral base and a color bottle is included for tinting on the job. You can select from three grades to achieve a wide range of finish textures. This material is also used in our MULTI-TEX, HARD COAT and Insulated Concrete Form Systems as seen above.





## ONE PART SCRATCH KOTE

SCRATCH KOTE 2000® remains the gold standard for pool renovations as it has for nearly 30 years. It is a super-bonding, latex modified, cementitious coating which forms a hard, rough, textured base coat. Once applied by roller or spray, SCRATCH KOTE 2000® provides the ideal surface for new pool finishes. It creates both a mechanical and chemical bond between the old finish and the new finish which can range from plaster, quartz, pebble, or tile. It is similar to new gunite or shotcrete in both function and appearance. SCRATCH KOTE 2000® eliminates chip outs, brown coats, and minimizes down time.



## TWO PART SCRATCH KOTE

Two part Scratch Kote is also available for those that want to add the "liquid glue" to the bags. Application, appearance, and function are the same as our One Part Scratch kote.





## THIN SET MORTARS



Multicoat has thin set mortars for a variety of tile setting requirements:

FLEX SET is premium thin set mortar high in polymer content for setting large tile, glass, brick, stone and veneer. MULTI SET is a mid grade polymer enhanced thin set used to set any size tile horizontally and up to mid size tile vertically.

STANDARD SET is contractor grade slightly polymer enhanced thin set at an economical cost.

## SHOWER WATERPROOFING

GREEN BARRIER is a ready to use, fast drying, roll on, liquid applied elastomeric waterproofing membrane for use under tile in showers. It creates a seamless rubber membrane.

Stitch bond polyester fabric mesh is embedded into Green Barrier on all corners to help strengthen and reinforce those areas.



## INTERIOR DAMP PROOFING



BG 2000 is a ready to use liquid applied elastomeric damp proofing membrane for applications to interior basements, crawl space walls and support structures. The flexibility and rubber like properties of BG2000 will help bridge minor cracking that may occur in the walls. Helps reduce and eliminate dampness in these areas. It is furnished in a White color and should be painted with acrylic or latex. White BG2000 is a ready-to-use, paint on, low odor sealer. It's easy to roll on, fast drying and cleanup is done with soap and water.



# About Us

For almost 30 years, Multicoat has maintained its reputation for providing the highest caliber of products to the construction industry worldwide. Since our inception we have partnered with well known, and globally respected, raw material manufacturers and suppliers. They supply us with the quality ingredients we demand in order to offer our clients the best possible product. We offer products and systems for pool restoration, deck coatings, sealers and stains, waterproofing, concrete repair, stucco systems and more.

## Notable Customers

Sea World Japan  
Hampton Inn  
City of Glendale, AZ  
YMCA  
Angel Stadium  
Mirage Casino

Wipeout TV Set  
Sheraton  
Ikodomia Greece  
Great Wolfe Lodge  
CAMC Hospital Group  
Colorado Belle Casino

USC  
Mission Viejo Company  
Disney  
US Embassy—Jamaica  
Lenar Homes  
Union Carbide

For more information and technical support, please contact us using any of the following methods:

### West Coast



Toll Free: **(877) 685-8426**

23331 Antonio Parkway  
Rancho Santa Margarita, CA 92688



### East Coast



Toll Free: **(800) 660-6729**

1 Putnam Business Park Drive  
Fraziers Bottom, WV 25082

**info@multicoat.com | www.multicoat.com**

The drawings found within this publication are for general knowledge use and your project may require more steps than those shown. Therefore, prior to using any of our products, visit our website, [www.multicoat.com](http://www.multicoat.com) and read all applicable installation instructions and specifications for the specific Multicoat system you are applying. You can also call our toll free numbers for technical assistance.